



VEHICLE CLUB  
Wellington

# Cross Country Chronicle October 2013



The Official Magazine of  
**The Cross Country Vehicle Club (Wellington) Inc**  
PO Box 38-762, Te Puni 5045, Wellington

The club meets at 7:30pm on the 2nd Wednesday of each month at the



# Time for a holiday in Mooloolaba Pool OR Beach



Air Conditioned Fully Self Contained Apartments located opposite the Famous Mooloolaba Beach with a short stroll to all the Cafes, Restaurants and Shops on Mooloolaba Esplanade.

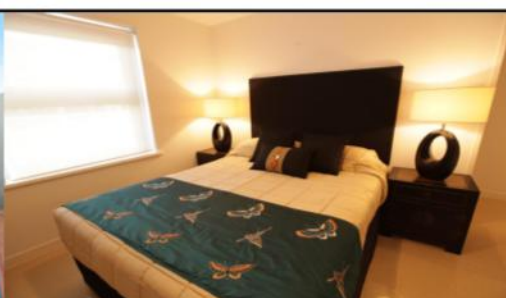
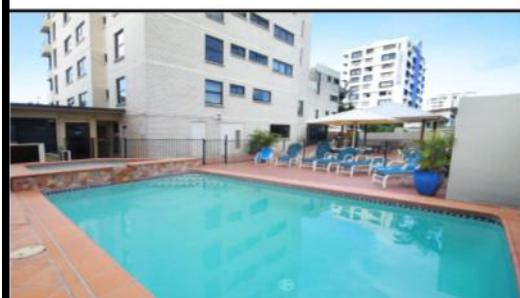
137 Mooloolaba Esplanade, Mooloolaba, Queensland  
[www.windwardapartments.com.au](http://www.windwardapartments.com.au)   [info@windwardapartments.com.au](mailto:info@windwardapartments.com.au)

## **FREE COOKED BREAKFAST**

and Stay for 3 Nights, Pay for 2

Check out our web site or

Email Larry on [info@windwardapartments.com.au](mailto:info@windwardapartments.com.au)





## WHEN HELP IS NEEDED

Should any members fail to return from any outing, four wheel drive or otherwise, whether as a club member or as a private individual, the following person/s should be contacted in the first instance:

**Anthony Reid 973 8262 or 027 273 6579 or 021 061 1831**

**Morris Jury 566 6197 or 021 629 600**

### Table of Contents

Cover	Taupo 1000 Aerial View
P. 3	Help, Index, Safety Inspectors
P. 4	Upcoming National Events
P. 5	Committees (no Presidents Piece???)
P. 7	Off the beaten track
P. 12	Operation Stirling
P. 13	Night Hawk Family Rally
P. 13	Taupo 1000
P. 14	NZFWDA Southern Safari 2013
P. 17	Urawera Safari 7
P. 19	Club Trips - Oct, Nov & Dec
P. 20	Trip Categories

### Vehicle Inspectors

#### **Dayal Landy**

Gold Coast Mechanical  
2 Epiha St, Paraparaumu  
Ph. 04 902 9244

#### **Antony Hargreaves**

Epuni Motors 1987 Ltd  
2 - 6 Hawkins St, Lower Hutt  
Ph. 04 569 3485

#### **Dave Bowler**

#### **Pete Beckett**

Bowler Motors Ltd  
11 Raiha St, Porirua  
Ph. 04 237 7251

#### **Grant Guy**

G Guy Motors  
61-63 Thorndon Quay, Wellington  
Ph. 04 472 2020

#### **Carl Furniss**

Wellington 4WD Specialists  
26 Hawkins Street, Lower Hutt  
Ph. 04 976 5325

#### **Shane & Carl**

Mendoza Mechanical  
34 Goodshed Road, Upper Hutt  
Ph. 04 527 7274

***NB: Please remember to call and make an appointment before turning up for an inspection!***



### MAGAZINE CONTRIBUTIONS

This is your magazine so it can only be as good as the contributions you make!! We need any articles, trip reports, technical items, "How-to's", etc to be in the hands of the editor by the end of each calendar month.  
Please email to newsletter@ccvc.org.nz or post to 34a Hine Rd, Wainuiomata or fax to 04 914 8366.

**DISCLAIMER:** The opinions expressed in this magazine are those of the contributors and not necessarily those of the club, it's executive or committee members. Publication of maintenance techniques or mechanical modifications should be weighed against generally accepted procedures and the Club should not be considered an authority in this area. The mention of products, service procedures or service organisations herein does not constitute endorsement by the Club, the Cross Country Chronicle or it's Editor.

# Upcoming National Events

## **Oct 18-20: Manukau Winch Challenge**

Held in the Onewhero area, the NZ1 competition will be run in conjunction.

## **Oct 23-25: Hawke's Bay Show**

Includes Land Rover display, Hawke's Bay Showgrounds, Kenilworth rd, Hastings.

## **Oct 25: Taranaki Charity vehicle Show**

Pukekura Raceway & Function centre, Rogan St, New Plymouth, see [thetaranakicharityshow.com](http://thetaranakicharityshow.com) for details.

## **Nov 03: National Trials Round 1**

Held at Kakahu Rd, SH28, between Te Poi & Putaruru.

## **Nov 03: Rotorangi Gymkhana**

Hosted by the Waikato Jeep Club / Waikato 4x4 / Cozzie 4x4. Breakfast in Cambridge then travel to the Rotorangi farm venue.

## **Nov 16: Matariki Forests 4WD Tagalong Safari**

Hosted by the Whangamata 4x4 Club on forest and dirt tracks, great lookouts and the odd challenge or two. For more details contact [brendonjpugh@xtra.co.nz](mailto:brendonjpugh@xtra.co.nz) or [www.whangamata4x4.org](http://www.whangamata4x4.org)

## **Dec 07-08: Operation Stirling**

Held on army land around Waiouru, see poster further on in this mag.

## **Dec 08: National Trials Round 2**

Held just out of Te Puke.

## **Jan 22-23: Te Awamutu Rotary 4WD Safari**

Bush, farmland and forestry "follow me" for shiny vehicles, with some challenges along the way. For more details contact [dsamuel@clear.net.nz](mailto:dsamuel@clear.net.nz), 07 871 5889 or 027 493 7649

## **Jan 25-26: 2014 Tour de Whanga**

Held for the more adventurous safari people, an exciting but fun trip based in the Matariki Forest. For more details contact [brendonjpugh@xtra.co.nz](mailto:brendonjpugh@xtra.co.nz) or [www.whangamata4x4.org](http://www.whangamata4x4.org)

And further ahead:

Jan 25: National Trials Round 3, Turakina  
Feb 04: National Trials Round 4, Wellington  
Mar 01: 4x4 National Park 2014  
Mar 05: National trials Round 5, Manawatu

*Some details in this column appear courtesy of Cathy Parker, publisher of the New Zealand 4WD and Sportvehicles magazine. Potential participants should contact the event organiser; CCVC cannot take responsibility for any changes or inadvertent inaccuracies.*

# LEADING BRAND 4X4 WINCHES & ACCESSORIES



**Runva Performance Winches.** The only winch you will ever need. Competition proven in NZ and around the world year after year.

**BEST RANGE - BEST QUALITY - BEST PRICE**



**PREMIUM AUSTRALIAN MCC 4X4 ACCESSORIES**

Winch Bars, Side Bars, Rear Bars, Roll Bars, Side Steps, Roof Trays, Drawer Systems.

MCC is a worldwide supplier of quality products.

**WINCH BARS / BUILT IN SPOTLIGHTS - \$1200!!**

**For more info 021 535 007 | [info@winch.co.nz](mailto:info@winch.co.nz) | [www.winch.co.nz](http://www.winch.co.nz) | [www.mcc4x4.co.nz](http://www.mcc4x4.co.nz)**



## Club Sub-Committees

The club has the following sub committees running currently (convenor named first, where applicable):

- **60k:** Terence Broad, Ron Johnson, Bruce Mulhare, Antony Royal, John Vruink, Mark Wolstenholme
- **Club Recovery:** Anthony Reid, Morris Jury
- **Community Response Group:** Steve Mercer, Mike Murphy, David Coxon
- **Competition:** Neil Blackie
- **Deadwood:**
- **Safety:** Murray Taylor, Carl Furniss, Peter King
- **Trip Leaders Forum:** Steve Mercer, All trip leaders
- **Web Project:** Murray Wills, Grant Purdie, Stefen Cook, John Parfitt, Mike Stevens

The club also has the following external organisation liaison people:

- **Akatarawa Recreational Access Committee:** Ralph Dobson, Charles Odlin & Grant Purdie
- **Dept of Conservation Head Office Liaison:** Paul Adams
- **Foxton Beach Coast Care:** Bruce Mulhare, Grant Purdie, Russell Stevens & John Vruink
- **Friends of Belmont:** Stewart Burrell
- **Greater Wellington Regional Council:** Grant Purdie
- **Horowhenua District Council:** Grant Purdie
- **Tread Lightly!:** Ralph Dobson
- **Wellington City Council:** Grant Purdie & Barry Insull

A doctor on his morning walk, noticed an older lady sitting on her front step smoking a cigar, so he walked up to her and said, "I couldn't help but notice how happy you look! What is your secret?"

"I smoke ten cigars a day," she said. "Before I go to bed, I smoke a nice big joint. Apart from that, I drink a whole bottle of Jack Daniels every week, and eat only junk food. On weekends, I pop pills, get laid, and don't exercise at all."

"That is absolutely amazing! How old are you?"

"Thirty-four," she replied.

# G. Guy Motors

## 4WD SPECIALISTS NZ





## **CLUB RADIO CALL SIGNS**

The Club uses a series of radio call signs in the Kxxx series to meet our licence requirements. Once you get on a trip you soon know what call sign is tail end charlie etc for the day. But basically if you don't yet have a Call Sign you are not authorised to use the Club radio licence.

Call signs are available to financial members on request to [database@ccvc.org.nz](mailto:database@ccvc.org.nz)

So if you have purchased a suitable radio for CCVC use, make sure you get a call sign allocated.

# Upper Hutt

# Tyres & Batteries

Opposite Railway Station, Princes St, UH

.....

**Tyres**  
**Wheel Alignment**  
**Batteries**

**Nitrogen Tyre Filling**

**Finance & Laybuy**  
**Options Available**

# 528 8836

### **CCVC Life Members**

Tom Adams	Graham Barr	George Bean (Deceased)	Leith Bean	Peter Boniface (Deceased)
Stuart Brown	Andy Cockroft	Owen Farghar	Mike Gall	John Hughes
Bob Jeffery (Deceased)	Heather Jeffery	Ron Johnson	Steve Lacey	Colin Landy
Phil Lewton	Vern Lill	Bruce Mulhare	Raynor Mulhare	Ron Oliver (Deceased)
Peter Osborne	Ross Perkins	Grant Purdie	Tony Street	Ron Wadham



## Off The beaten Track Trip!

This is a trip report of the trip: Off the Beaten.

This report was written by Jayden Smith, age 11

We started our trip at Bulls Run Road Entrance. Just near the start of the track was a route that led up to a ridge. We were planning on taking this road but we couldn't because a big, yellow digger was parked at the entrance so we couldn't go that way but there was another way to go that would bring us to the same spot, though it was longer and there were more ruts. At the first main rut we came to, we had to go down one at a time. It was really deep and slightly dangerous after about the 6<sup>th</sup> vehicle because it was turning into mud and the cars were slipping and sliding a lot. Tailing Charlie come down the hill above the rut instead of through it, which was dangerous (I think) because if he slid into the rut he could have broken something. By that I mean one or more of three things. The first was his car, the second was someone and the third was trees. This rut was on Junction Hill. Directly after the rut there was a big, deep puddle that we had to go through.



*The Deep Puddle*

We went on to Dicks Yard and did a loop around and came back to Dicks Yard and that's where we stopped for morning tea. We also stopped there to fix a squeaky brake. The squeaky brake was just a stone in the brake pad causing it to rub and make a loud, squeaky noise. It was so loud that I heard even though he was two cars back. Loud!



*Fixing the squeaky Brake*



*Lunch at the chainsaw party*

From there we carried on to Wainui stream which is about 5 kilometres though it took us 2 hours because we had to clear the track, make a makeshift bridge, cut down bush/ move fallen trees and do quite a bit of digging. At one place where they were cutting down trees I was stuck in the car because the river bank came up to the height of the window. We were also parked in the river which made it very hard to get out. At this same place, someone took his lunch (It was a pie with tomato sauce) and he dropped his tomato sauce in the river.



*All the Suzukis made it.  
Where are all the others?*

After this, we went to High point which was the top of one of the hills that make up the valley of Wainui Stream. We had to go under a power pylon to continue our journey, which was heading towards Orange Hut. Two Vehicles went on to explore the ruts down near Orange Hut but one popped a tire and had to be winched out.



*Swapping the popped tyre*

We decided to not go that way.



We continued along Hydro Valley Road and into the Whakatiki forest, where there was a rut that went up about half a metre and we had to drive over it. It was shaky. We had to cross a small stream and on the other side there were two forks. The left had a tree fallen down on it and the right had a massive rut. These forks both led to the same place. We went along the right fork. (Now it gets exciting☺). A guy on a motorbike came down Perhams Road and said “my mate has gone and broken his leg”. Only 2 of the 15 cars were there at that time because one of the cars got stuck and all the other cars were backed up behind it. One of the two cars went to help the guy with the broken leg and the other one went to help the stuck car. After the stuck car was un-stucked another car went up to help the guy with the broken leg. I was in that car. The driver got on the radio and called the ambulance. The operator asked a lot of questions and about an hour and a half after the leg was broken the operator said “the ambulance is leaving the hospital now”. I thought that the leg would have healed in the time of breaking the leg and the ambulance arriving, that’s how long it took.



As we were coming home we passed another convoy of about ten vehicles going the other way. We passed a ranger and a policeman who told us that there had been a different motorbike accidents and this other guy had to be helicoptered out to the hospital. We finally got onto Three Skulls Road which is the last stretch of our journey.

### Group Info

Name	Position	Job on This Trip	Call Sign	Type of 4X4
Graeme	Official Leader	Leader	Suziblu	Suzuki
Frank	Trainee Leader	Driver	Frank	Suzuki
Shaun	Trainee Leader	Driver	Big Red	Toyota
Brett	Participant	Driver	Brett	Toyota
Ian	Trip Leader	Driver	Mud Lark	Pajero
Harry	Participant	Photographer	Harry	Suzuki
AJ	Training Officer	Chainsaw Operator	AJ	Suzuki
Hamish	Participant	Driver	Hamish	Land Rover
Jonathan	Participant	Driver	Jonathan	Land Rover
Dave De Martin	Trainee Leader	Tail End Charlie	Double D	Pajero
Greg	Trip leader	Lead Vehicle	Bob Cat	Suzuki
Ken	Participant	Driver	Ken	Jeep
Grant	Participant	Casualty Transport	Tigga	Safari
Fen	Participant	Driver	Fen	Jeep
Howard	Participant	Driver	Howard	Suzuki

I would like to thank the following people:

- Graeme & Linda for taking me on this trip
- Harry for giving me the photos that I used
- Graeme for organising the whole trip
- The people who gave us permission to go on this trip
- Every one else on the trip just for being there

And following on from Jayden’s report the following emails were received as well after trip leader Graeme asked over the RT for input from the rear of the convoy as we did not get involved in any incident:

Subject: What happened at the back..

Not a lot happened until Wainui stream. While you guys at the front were cutting up the big log we were stuck in the stream and everyone was trying to get dry land outside their driver's door so they could get out. The Cherokee tried to get in the middle 'bank' and drove over a tree stump about 50cm high and 10cm thick. It

(Continued on page 10)





[www.wgtn4wd.co.nz](http://www.wgtn4wd.co.nz)



Repairs and maintenance of all  
off road vehicles.

Modifications a speciality.

*CCVC safety inspections*

Contact Carl at  
**Wellington 4WD Specialists Ltd**  
**26 Hawkins Street**  
**Lower Hutt**

**Phone (04) 976 5325, Fax (04) 976 5313**  
**or 027 201 2529**

# SNATCH MASTER

*high elongation nylon recovery straps*

Minimum breaking load 8,000 Kgs

Offers similar elongation to nylon rope, but requires less storage space.

Described by users in trials as 'magic, the best product I have ever used !'

**100% New Zealand made**

Bring in your club membership card and receive 15% discount off our Snatch Straps, Shackles and Chains.

Standard lengths 6.0 metres & 9.0 metres with special lengths manufactured to order in either our Auckland or Christchurch factories.

**BRIDON**

Incorporating

Manufactured by

Branches throughout New Zealand  
Sales and Service

Free Phone 0508 BRIDON (274366)

Wellington Branch

2 Udy St, Petone 04 568 4384

**COOKES GOUROCK**

(Continued from page 8)

caught behind the ARB bumper and reversing off just dug the wheels into the stream bed. The bumper was moving and the led flight surround popped off before he gave up. Double D had to get underneath with his chainsaw to cut the stump off to get the Cherokee free.

In the trees on Manufacturers' Challenge Howard to a fairly aggressive line and got his Suzuki stuck. Jonathan pulled him out backwards, but the photos will look like the Suzuki pulling the Land Rover. At the same time the Cherokee tried a different line into the trees and got stuck so I turned back to winch him up, which took two pulls as he was sliding sideways and the front was catching on a trunk - we needed a pulley on a tree to angle the pull.

I didn't see it, but I think Jonathan struggled on the left side out of the creek and had to go right. Further up Double D got stuck just where the last rut finished. He tried reversing and taking a run but couldn't even make it back to where he got to before and was eventually near the bottom with me and the Cherokee having to back down to give him room. Then he got p'd off and gave it beans, which almost had him over the edge and he ended up at 45 degrees to the track with the front pointing over the edge. I walked up with Cherokee driver (don't know his name) and we spotted that the Pajero's front wheels weren't turning. DD self recovered with 2 winch pulls because he didn't want Harry towing him with a 'Zuk. He'd blown a from CV.

I think that was it, except four DD and Valley both parked at the side of the road waiting for the other to come past at the end :)

Fen

I think the final paragraph should be something like:

When asked at the end of the trip, DD was still unsure whether the day's bigger disappointment was breaking

(Continued on page 11)



(Continued from page 10)

a CV or running out of pies before our last stop (while waiting for the boys to return from dropping off the injured motorcyclist).

Brett

-----

I was trying to think of something to add to your article and I realised that the British Vehicles were the only group that neither needed towing nor broke down on today's trip. Sounds like an important comment to me...

Jonathan

-----

A wee note for the trip report from Tigga....

The day started well, normal jostling for position. But what only one Nissan.... Is this a pre run to the Suk Fest at Easter... They are taking over these Suk's. Tigga asks who is going to pull me out if I get stuck... Three Suk's in a row. The making of a Tui advert.... **The Suzuki will pull you out.... Yeah right!**

Then we find Mud and a Creek and more creek.... even more creek..... and Lisa my co-pilot gets handed the gloves to move the chain sawed tree rounds... what gentlemen we have on such trips..... they even helped her out of the mud before it got down the top of the gumboots..... Well one did while the rest went for the cameras.....

Then I have to have my front hubs removed as I have a CREAK in the front end.... Is that a CV on the way out..... So gentle gentle up the big hill. Then 2 wheel drive only all the way out. Missing the Manufacturers Challenge and more mud and stuff.....

Onto being the rescue wagon picking up the motorcyclist with the broken thumb and very sore knee. He was real white when we loaded him into the back.... Out to the Mangatuktuku end and a quick key drop of so we can head out.... through the locked gate.

Our good turn done and the day over for Tigga as with a bad CV it's not worth the trip back over the Pram track. I just weigh way too much to get stuck that far into the bush... a bit like my owner really.....

-----

One of the neat things about 4x4 ing is the friendly, helpful people who go on club trips. One particular guy who rushed around heaps helping and making sure everyone was ok, was a great example of this. His name was Dave and his radio call sign is Double D, his 4 wheel drive is an awesome Pajero. From what I could see it was easily the best truck there, and Dave is an awesome driver, a really good example of why it's best to join a club like CCVC.

The above passage is exactly the right sort of thing to put in you report. [I'll be at Graeme and Linda's place about 2pm with the promised \$20]. And don't forget, bribery is ok!

Dave





**A STERLING  
JOB, SIR!**

**JOIN THE SOS – THE SPECIAL OFFROAD  
SAFARI – FOR A LONG RANGE 4WD PATROL  
OF THE WAIOURU DESERT!**



## **OPERATION STIRLING**

**2-DAY GUIDED 4X4 TOUR  
SATURDAY 7 DECEMBER –  
SUNDAY 8 DECEMBER 2013**

This year, the event is orientated towards 4x4s which are more road orientated ie: utes, SUVs etc. Huge mud tyres and winches are not required. We have close on 200,000 acres we can view so there is plenty of tracks, gravel roads and desert we can explore. This event is ideal for families and those who love driving their 4x4 but are not experts with it off-road.

'Club orientated 4x4s' are welcome and will either be used for recovery or split into their own group to undertake more challenging terrain.

Accommodation options include army barrack accommodation plus all meals supplied; or self cater and camp on the Waiouru military camp ground. Showers and toilets will be supplied.

Numbers strictly limited.

The annual Kaimanawa horse trek is being conducted on the same weekend. Make it a real family affair.

**REGISTER NOW OR FOR FURTHER  
INFORMATION VISIT OUR WEBSITE  
[WWW.OFFLIMITS.CO.NZ](http://WWW.OFFLIMITS.CO.NZ) OR EMAIL  
DAVID GREENSLADE  
[DAVE@OFFLIMITS.CO.NZ](mailto:DAVE@OFFLIMITS.CO.NZ) OR  
[INFO@OFFLIMITS.CO.NZ](mailto:INFO@OFFLIMITS.CO.NZ)**

OFFLIMITS IS A CHARITABLE TRUST WHOSE PURPOSE IS TO RAISE FUNDS FOR NEW ZEALAND SERVICEMEN TO PARTICIPATE IN SPORTING EVENTS AND TO SUPPORT THOSE WHO ARE INJURED WHILST ON ACTIVE SERVICE. OFFLIMITS IS NOT A COMMERCIAL ORGANISATION.



## **Night Hawk Family Rally - Saturday 16 November 2013.**

Start Time - 6pm

Finish Time - approx 9pm

Start - Totara Park side of the Totara Park bridge.

Limited Numbers

Cost \$30 per vehicle, proceeds going to Victim Support

This designed as a fun day, with questions to answer and things to spot.

You will need a good navigator, and you will be marked on your answers.

Vehicles leave at 5min intervals, your start time will be given to you when you register.

We will be finishing at the green hut at Rallywoods, anyone that would like to stay the night can. Because there is a locked gate to get out, everyone will go out at the same time when all is said and done.

This will be a rain or shine event.

Please ring John V and book in by the 14 Nov.

Looking forward to seeing you all there. And yes to those older members we have RUN this trip before. There will be a few changes due to the fact some of the roads are no longer there. Mind you it was run 18 years ago (give or take a couple of years) so you might not remember it anyway.

Cheers Terry Barr

### **Taupo 1000**

Taupo two weekends in a row, the first to check out the Taupo 1000 off road race and the second to chaperone the Upper Hutt under 13's rugby rep team. Both weather forecasts were for rain, luckily they got it wrong for the first visit, being the race.

I had stopped by Brian Howat's workshop a couple of weeks prior to pick up a club award he had kindly repaired, we got talking about the Discovery he has built up for off road racing in the standard class and he mentioned the new course for the 1000 which he understood better catered to spectators. After looking on the race web site I floated the idea with the family who seemed keen on a weekend away, by coincidence a teacher's only day allowed us to head off on the Friday morning with the camper in tow as race organisers offered free camping on site.



The race course for 2013 was only 15 minutes out of town on the Napier - Taupo road, we found our way to the entrance and traversed the forest road to come out on the farm land slightly above the short course race track. Practice was taking place so we quickly found our spot and watched as the class 8 trucks flew over the start finish jump on the spectator friendly short course. First person I see is Murray Taylor our safety officer checking out the action with the editor of 4x4 Action Mag. A

*(Continued on page 15)*



# Southern Safari 2013

28<sup>th</sup> October to 10<sup>th</sup> November

Starting in Picton and traveling over some of the South Island most scenic tracks and ending in Bluff.



( Mitchells Cottage )

## Accommodation:

We will be staying in camping grounds each night where there will be a good selection of accommodation.

## Meals:

Meals will vary from meals provided by local schools to restaurants.

**Cost:** \$10 / vehicle / day plus food & accommodation

## You choose:

You can do as many days as you want, but numbers are limited and people doing the full trip will have priority.

**Booking open 1<sup>st</sup> August**



( Hawkdun Range )

## CONTACT

**JOHN McDONALD**  
SOUTHERN ZONE  
PRO

03 308 0443

szpro@nzfwda.org.nz



## Monday 28<sup>th</sup> October

[Staying at Tahuna Holiday Park Nelson](#)

The Marlborough club will be taking us over some scenic tracks in the Marlborough Sounds area.

Grade 2

## Tuesday 29<sup>th</sup> October

[Staying at Kiwi Park Holiday Park Murchison](#)

The Nelson club will be taking us over the Porika & Braeburn Tracks to Murchison.

Grade 2

## Wednesday 30<sup>th</sup> October

[Staying at the Reefton Domain Camp](#)

The Nelson club will be taking us over Mike Dredges 4x4 bush tracks in the Murchison area.

Grade 3-4

## Thursday 31<sup>st</sup> October

[Staying at the Reefton Domain Camp](#)

The SINDA club will be taking us over Napoleons Hill, one of the iconic tracks on the West Coast.

Grade 2

## Friday 1<sup>st</sup> November

[Staying at the Geraldine Kiwi Holiday Park](#)

The SINDA club will be taking us through No Name Rd, then over Arthurs Pass to Geraldine.

Grade 2-3

## Saturday 2<sup>nd</sup> November

[Staying at Black Forest Station, Lake Benmore](#)

The Mid-Canterbury club will be taking us through the Te Mona Gorge, ending up at Black Forest on the shores of Lake Benmore.

Grade 2-3

## Sunday 3<sup>rd</sup> November

[Staying at Omarama Top Tem Holiday Park](#)

The Mid-Canterbury club will be taking us through the Black Forest Rd, then the Land Rover Owners Club Otago will take us on a 1/2 day trip in the Otematata Area.

Grade 2-3

## Monday 4<sup>th</sup> November

[Staying at Ranfurly Holiday Park & Motels](#)

The Land Rover Owners Club Otago will be taking us over the Omarama Saddle and down into Naseby via the scenic route.

Grade 2

## Tuesday 5<sup>th</sup> November

[Staying at Ranfurly Holiday Park & Motels](#)

The Otago Recreational 4WD club will be taking us up the walking spur to Mt Buster.

Grade 2

## Wednesday 6<sup>th</sup> November

[Staying at The Chalets Holiday Park, Cromwell](#)

The Land Rover Owners Club Otago will be taking us over Thompsons Road then along Rugged Range ending in Cromwell.

Grade 3

## Thursday 7<sup>th</sup> November

[Staying at The Chalets Holiday Park, Cromwell](#)

The Otago Recreational 4WD club will be taking us along the Old Man Range to the Obelisk, returning via the Waikaia Bush Rd.

Grade 2

## Friday 8<sup>th</sup> November

[Staying at Hectors, Kingston](#)

The Land Rover Enthusiasts Club are going to take us through the Hawksburn & Nevis roads.

Grade 1-2

## Saturday 9<sup>th</sup> November

[Staying at Te Anau Top 10 Holiday Park](#)

The Otago Recreational 4WD club will be taking us up Eyre Creek sand fly country so bring the repellent.

Grade 2

## Sunday 10<sup>th</sup> November

[Staying at the Ascot Park Hotel, Invercargill](#)

TBA

**Please Note:** Trip may change due to weather or access requirements.



( Mike Dredges Farm )

## Track Grading:

Grade 1: Family Shiny

Easy scenic tracks

Grade 2: Shiny 4x4

Novice drivers, scratches & mud possible.

Grade 3: Club 4x4

Some experience required scratches & mud likely.

Grade 4: Experienced 4x4

Experience required, possible panel damage deep mud & water likely.

Grade 5: Hard Yakka

4x4 experience necessary, vehicle damage likely, deep mud & water. Well setup truck only.



( Mt Buster )

## Minimum Requirements:

- \* Rated tow hooks front & rear
- \* First Aid Kit
- \* Fire Extinguisher
- \* Mud tyres
- \* Snatch rope or strop
- \* Third Party Insurance
- \* Road Legal





short time later the top 10 shoot out started, as I had never been to a similar event it was all new and we were much impressed by the new U class of basically standard Polaris and CanAm off roaders, bet we see some in the club pretty soon.

After racing stopped for the day we set up our camper looking down the straight at the start finish jump, great spot as my son didn't even get out of bed for the start on Saturday as he had such a good view. Into town for a hot pool swim and back out to the track where it was 4 degrees cooler than town, rained all night.

Good morning Taupo 1000 echoed out across the pits at 6am Saturday morning, I made my way across the track to the pits and watched as the 120 plus competitors got ready for the first of 500km races over the next two days. Found Brian's Disco on row 52 and caught up with the crew supporting Warren Jeffery's whose father was a founding member of CCVC, they were running a CJ5 (I think) Jeep and a new Buggy. With the 8am start approaching I made my way to the start, great seeing the mass take off with one unfortunate buggy getting less than 150m before breaking a gearbox.

The track is 50km per lap so we had about 25mins before they were due back into the natural stadium, time to head back to the camper for coffee and toast. First through with a five minute lead was the class 8 Nissan Titan V8 truck of Raana Horan before NZ1, the class 10 buggy driven by Hamish Lawlor lead the following group. Unfortunately that was pretty much the last we saw of Horan as he had major brake issues, who needs them ah. Heard stories of crews getting stuck out on the course and having fellow competitors call into the pits to pick up welding plants etc before dropping them off as they passed by, great sportsmanship. The race soon had NZ1 out front in the motor cycle powered and chain driven buggy, Brian and the Jeep boys were running strong as finishing was all important on day one. Six hours for the first finishers to complete their 10 laps, now the race was on to get across the line and start your lap before the track closed at 3pm as the majority of competitors had been lapped at least once, the idea is you start day two in the place you finished and with the margin you finished with, NZ1 had an 8min lead.



Once again we cut a track back into town for dinner with friends before having a dry but windy night back at the circuit. Another 6am wake up call and 97 starters got ready for another day. You

(Continued on page 16)



(Continued from page 15)

don't need to be a big budget team for this sport unless you want to be at the pointy end, a couple of Suzuki Vitara V6's were running and a couple of guys had entered a Subaru Legacy which did surprisingly well on day one. A very nicely set up Disco was looking very second hand after rolling on day one, plenty of work was still going on right up to and after the 8am start on day two. Brian started on row 20 and moved through the field to finish third in class, 22 overall, not bad as they started 102 on the grid.



The day finished with Clim Lamers in his Nissan V6 powered single seater taking out the overall win in 12 hours, 5 minutes and 21 seconds. NZ1 broke a rear shocky just past the start and instead of driving 50km without it he entered the pits at the exit and took a penalty dropping him down the order and finishing 3rd behind Ashley Kelly in the Evo VW. Fourth place was Ben Thomasen in the new UTV class driving the Polaris

RZ-R. Only 11 teams finished the 1000km's which is a testament to how punishing this event is on man and machine. A fantastic event which I encourage you to attend in two years' time, might enter myself in my new Polaris once the lotto result goes my way.

Ralph Dobson  
K182





# **Mahia Hunt (Inc)**

## **Urewera Safari No. 7**

***In conjunction with East Coast 4WD Club***

**Do not miss out, enter early and avoid disappointment. This event has in the past filled before closing date**

**Start:** Thursday 6<sup>th</sup> February 2014 (Waitangi weekend)

**Finish:** Sunday Midday 9<sup>th</sup> February 2014

The Safari will cover country between the Urewera Ranges in the West, Mahia in the East, Gisborne in the North and Napier/Taupo Road in the South.

The aim is to travel across country as far as possible, subject to weather conditions, with safety being paramount.

The Safari is designed as a family affair, camping each night along the route, a chance to make new friends, see a unique and untrekked part of New Zealand and enjoy local communities wonderful hospitality. As per past events the local communities will be offering breakfasts and evening meals at reasonable prices.

Entries will be done in teams of 3 vehicles (If you don't have a team enter anyway and a team will be made for you).

**Cost:** \$300.00 per vehicle

**Deposit:** \$50.00 per vehicle **due 19 December 2013** (Non refundable)

**Balance:** \$250.00 per vehicle **due 10 January 2014**

**Limited to 115 vehicles**

**Re tyres:** A good condition more aggressive tyre with at least 50% tread life left will cope with basic route,

**No dogs.**                **No firearms**

**Excellent fishing in lakes, rivers and sea.**



# Editorial Ramblings

**WANTED: Society Gossip, Scandal, Rumour, and if all else fails, TRIP REPORTS and NEWS! Photos also very welcome ....**

Electronic publishing is great as it extends my deadline somewhat - but everyone should still have access to the magazine prior to club night so that should all be good. I understand that only current members will have access to the monthly magazine for the month it's published, it will go onto the public website the following month.

**Alan...**



## Committee News

### **Vehicle Inspections**

Your vehicle should have been inspected and have a new sticker by now. Don't forget to contact the inspector prior to the inspection so that a time convenient to them can be arranged. Remember their "paying" work comes first.

### **Memberzone Password.**

Once a year the password to the CCVC memberzone is changed - and it was changed towards the end of September.

Subscriptions.

Have you paid yours yet? If not then you may get a phone call or you may not receive the magazine (interesting as if you don't get the magazine you won't be reading this then!)

### **Trino Koers.**

It was noted in the papers last month that Trino Koers has recently died - he was a landowner on the coast up from Cape Paliser that allowed 4x4 access to his land. He was a colourful character to deal with for some people, but I suspect he had "enough" of a range of people wanting to access his land over the years that his patience ran out towards the end. He did sell part of his land to DOC, and the rest of his property, (Ngapotiki Station) I think he retained ownership, though what will happened now who only knows.....

### **Tentative GWRC Summer Programme:**

#### **4WD BACK COUNTRY AKATARAWA**

Akatarawa Forest

Saturday 22nd February 9am-12noon; 1.30pm-4.30pm

\$20 per vehicle

Bring your vehicle and join the Cross Country Vehicle Club for a relaxed tagalong trip through Akatarawa Forest. The morning session departs from Totara Park, finishing at Maungakotukutuku Valley entrance. The 1.30pm session is in reverse.

#### **MT CLIMIE 4WD TRIP**

Pakuratahi Forest, Tunnel Gully Recreation Area Saturday 11th January 9.30am, 11.30am, 1.30pm, 3pm \$5pp or \$15 for families of 4 (2 adults and 2 kids under 15) Max 25 people per trip. Join the Cross Country Vehicle Club on one of four guided 4WD trips to the top of Mt Climie with its fabulous views of the Wairarapa and Hutt Valley. No private vehicles.

#### **SUNSET TOUR**

Battle Hill Farm Forest Park

Wednesday 8th January and Saturday 8th February 6pm-9.45pm \$5pp Max 30 people. Team up with the Cross Country Vehicle Club for a 4WD trip through farmland and forest, culminating with sunset views over the Pauatahanui Inlet and Cook Strait. No private 4WDs allowed.



Date	Name	Organiser	Category	Place
<b>October 2013</b>				
Wednesday 9th	CCVC Club Night - Visitors Welcome. 7:30pm, Petone Working Mens Club, Udy St, Petone	Charles Odlin	Meeting - 19:30	Petone Working Men's Club, Udy St
Saturday 12th	Akatarawa Ramble - Bookings Required - Book with Graeme (04)5267636 Cellphone 0292001700	Graeme Millard	Family Shiny	Akatarawa Forest
Saturday 12th	Training day for Prospective Members. - Book with Andrew (AJ) - (04) 568 - 2136 Cellphone 021 760 238	Andrew Johnston	Family Shiny	Orongorongo area
Sunday 20th	Orongorongo Monthly Trip - To be confirmed (lambing etc) - Book with Morris (04) 566 - 6197 Cellphone (021) 629 - 600	Morris Jury	Family Shiny	Orongorongo area
Friday 25th	Labour Day Weekend - Otapawa - Weekend with attitude - Limited numbers - Bookings Essential	Stewart Burrell	Shiny 4X4 / Club 4X4	Otapawa Station, Haunui Rd off Route 52, Tiraumea, (sign posted as you approach Tiraumea) - OR via The Alfredton Road toward the coast from Eketahuna view at <a href="http://www.otapawa.co.nz/farmstay.htm">http://www.otapawa.co.nz/farmstay.htm</a>
Saturday 26th	Labour Weekend - Akers (Bookings Required - Email Preferred)	Ian Groom	Shiny 4X4	Akatarawa Forest
Wednesday 30th	CCVC Committee Meeting	Charles Odlin	Meeting - 19:30	Porirua Club
<b>November 2013</b>				
Sunday 3rd	Akatarawa Ramble - Bookings Required - Book with Graeme (04)5267636 Cellphone 0292001700	Graeme Millard	Family Shiny	Akatarawa Forest
Saturday 9th	South Coast (Red Rocks and beyond) Clean Up	Barry Insull	Family Shiny	Wellington South Coast
Monday 11th	Trip Leaders Forum	Steve Mercer	Meeting - 19:30	
Wednesday 13th	CCVC Club Night - Visitors Welcome. 7:30pm, Petone Working Mens Club, Udy St, Petone	Charles Odlin	Meeting - 19:30	
Saturday 16th	Family Fun Run	Leon Zwetsloot	Family Shiny	Akatarawa Forest & Rallywoods
Saturday 23rd	Orongorongo Monthly Trip - Book with Morris (04) 566 - 6197 Cellphone (021) 629 - 600	Morris Jury	Family Shiny	Orongorongo area
Sunday 24th	Otari Trust Redwoods Wander - Bookings Required	David Sole	Shiny 4X4	Akatarawa Forest
Wednesday 27th	CCVC Committee Meeting	Charles Odlin	Meeting - 19:30	Porirua Club
Saturday 30th	Taranaki with Egmont Club - Limited Numbers - Bookings Essential	Ralph Dobson	Shiny 4X4	Aothuia Station - Taranaki Whangamomona see notes section
Saturday 30th	Terewhiti Clean Up and Trip - Bookings Required	Ray Harkness	Shiny 4X4	Terawhiti Station
<b>December 2013</b>				
Saturday 7th	Akatarawa Ramble - Bookings Required - Book with Graeme (04)5267636 Cellphone 0292001700	Graeme Millard	Family Shiny	Akatarawa Forest
Wednesday 11th	CCVC Club Night - Visitors Welcome. 7:30pm, Petone Working Mens Club, Udy St, Petone	Charles Odlin	Meeting - 19:30	Petone Working Men's Club, Udy St
Sunday 15th	Orongorongo Kids Christmas Run - Bookings Essential	Morris Jury	Shiny 4X4	Orongorongo area

A Mexican maid asked for a pay increase.

The wife was very upset about this and asked: 'Now Maria, why do you want a pay increase?'

Maria: 'Well Senora, there are three reasons why I want an increase. The first is that I iron better than you.'

Wife: 'Who said you iron better than me?'

Maria: 'Your husband said so.'

Wife: 'Oh.'

Maria: 'The second reason is that I am a better cook than you.'

Wife: 'Nonsense, who said you were a better cook than me?'

Maria: 'Your husband did.'

Wife: 'Oh.'

Maria: 'My third reason is that I am a better lover than you.'

Wife (really furious now): 'Did my husband say that as well?'

Maria: 'No Senora, the gardener did.'

SHE GOT THE RAISE!

## **Trip Categories**

The following trip category definitions, plus any *additional* requirements specified on individual Trip Information Sheets, will be enforced, for safety reasons. Trip Leaders will turn away vehicles or drivers that do not comply. The vehicle and driver requirements given here are a summary of the full requirements listed on the club website. Please refer to [www.cvc.org.nz](http://www.cvc.org.nz) for a definitive list of requirements.

For all Categories: All open or soft-top vehicles must have a roll bar or roll cage.

All Categories **other than Family 4X4** are for members only. Prospective members and visitors are welcome if they can demonstrate to the Trip Leader they are members of another club and have adequate experience.

### **Family 4X4:**

**Description:** Family trip. These trips will be straightforward and will usually include some degree of guidance in driving techniques as necessary.

**Drivers:** Particularly suited to family outings and drivers new to off-road driving, this category is also open to anybody who enjoys this style of trip.

**Members:** Anybody is welcome, especially prospective new members.

**Vehicles:** An important objective is minimal challenge and minimal risk to vehicles. Club safety equipment is mandatory for club members; it is not mandatory for non-members although it is recommended for vehicles once their drivers have participated in one or two trips. All open or soft-top vehicles must have a roll bar or roll cage.

### **Shiny 4x4:**

**Description:** More difficult family trips, for shiny wagons and drivers *with some experience* who want more challenge and don't mind minor bush marks etc on their vehicles.

**Drivers:** Must have some experience, particularly important are experience in stopping, failed hill climbs, steep descents and sidelings. Club members must have completed CCVC Driver Training and participated in at least 2 Family 4X4 trips after becoming a member.

**Vehicles:** Vehicles must have mud tyres, tow hooks and all the required equipment per the club's document "Vehicle Safety & Equipment Inspections". This applies to all vehicles on the trip.

### **Club 4x4:**

**Description:** Challenging trips, for experienced drivers. There will be steep and challenging terrain, modestly deep water and mud, likelihood of bush marks.

**Drivers:** Must have experience beyond that required for Shiny 4x4 trips, including water crossings and vehicle recovery. Club members must have participated in at least 2 Shiny 4X4 trips.

**Vehicles:** Must have mud tyres, tow hooks and all the required equipment per the club's document "Vehicle Safety & Equipment Inspections". This applies to all vehicles on the trip. Accessories such as high-lift jacks, externally mounted spare tyre, bush bars and multiple jacking points are of advantage. Winches are often particularly useful. Generally a short wheelbase vehicle is better suited for the tight tracks.

### **Hard Yakka:**

**Description:** Difficult trips with very challenging terrain and surfaces, where winching, digging, and vehicle damage are all a possibility!

**Drivers:** Experienced drivers only, must have approval of Trip Leader. Club members must have participated in at least 3 Club 4X4 trips.

**Vehicles:** As per the Club 4x4 category. In addition, a roll-bar or roll-cage is recommended for all vehicles on Hard Yakka trips. Often a winch is mandatory on a Hard Yakka trip; this will be specified on the Trip Information Sheet



# Autolign

## THE STEERING & SUSPENSION SPECIALISTS

For all your suspension and steering requirements contact:

12 Petone Avenue  
Petone  
Lower Hutt

Ph. 586 7413



# WR TWIGG Ltd

*Light / Heavy Transport Engineering Supplies*

Auto Electrical Supplies

Abrasives

Cutting Tools

Brass Fittings & Valves

Chemicals & Lubricants

Heavy Transport Parts

Light Trailer Components



Hand & Power Tools

Fasteners

Hose & Tubing

Clips & Clamps

Trailer Parts

Bolts & Nuts

Boat Trailer Rollers



**31 Railway Ave, Lower Hutt**

Ph. 04 570 6688, Fax. 04 570 6686, Mob. 021 445 239

# ACTION TYRES

Call (04) 939 2284

Cars

Vans

4x4's

Commercial Vehicles

Tyre Service & Repairs

Industrial Equipment

Welcome to **ACTION TYRE CENTRE LTD** where you will find great service, and great prices along with friendly staff.

We are here to help you find the right tyre fit for your vehicle at affordable prices. We'll fit them while you put your feet up, relax and have a coffee in the waiting room.

We fix punctures, do wheel alignments, balancing & fitting. We also have fleet servicing for all your business needs. Drop in or give us a call on 04 939 2284.

Tyre & Puncture Repairs, Tyre Fitting, Wheel Balancing, Wheel Alignment  
Mag Wheels and Fitting, Battery Check and Replacement

For cars, vans, 4x4's, light and heavy commercial vehicles and also industrial equipment.

**Eftpos, Master and Visa cards accepted**

## About us:

We are a family business that employs a dedicated team to provide friendly and excellent service.

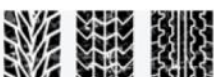
Action Tyre Centre Ltd has been in business for over 20 yrs servicing local and regional public and commercial vehicles.

With over 40yrs experience in the tyre business, Phil is committed to bringing you the best. We are able to source all the quality brands.

We enjoy being part of the Lower Hutt community.



**GOODYEAR**



**Action Tyres - 7 Wareham Place - Seaview - Lower Hutt - (04) 939 2284**

