



VEHICLE CLUB
Wellington (inc)



VEHICLE CLUB
Wellington (inc)

Cross Country Chronicle

Merry
Christmas
CCVC
Members!



December 2005

The Official Magazine of
The Cross Country Vehicle Club (Wellington) Inc
PO Box 38-762, Te Puni, Wellington



For non
Members

www.ccvc.org.nz

Cross Country Vehicle Club (Wellington) Inc
PO Box 38-762, Te Puni, Wellington
www.ccvc.org.nz



VEHICLE CLUB
Wellington (inc)

CCVC Life Members

Andy Cockroft	Bob Jeffrey (Deceased)	Bruce Mulhare	George Bean
Graham Barr	Heather Jeffrey	Leith Bean	Mike Gall
Owen Farghar	Raynor Mulhare	Ron Oliver (Deceased)	Ron Wadham
Steve Lacey	Stuart Brown	Tom Adams	Tony Street
Vern Lill			

**The club meets at 7:30pm on the 2nd Wednesday of each month
at the Petone Working Mens Club, Udy Street, Petone.**

MAGAZINE CONTRIBUTIONS

This is your magazine so it can only be as good as the contributions you make!! We need any articles, trip reports, technical items, "How-To's", etc to be in the hands of the editor by the end of each calendar month. Please post to 34a Hine Rd Wainuiomata, fax to 04 914 8366 or email to newsletter@ccvc.org.nz

SAFETY POLICY

Should any members fail to return from any outing, four wheel drive or otherwise, whether as a club member or as a private individual, the following person/s should be contacted in the first instance:

Jim Johnson - 938 9404 (Hm) or 021 389 404

Gavin Holden - 025 249 1959

Rodney Bracefield - 234 8887 (Hm), 914 8383 (Wk) or 021 488 808

DISCLAIMER: The opinions expressed in this magazine are those of the contributors and not necessarily those of the club, it's executive or committee members. Publication of maintenance techniques or mechanical modifications should be weighed against generally accepted procedures and the Club should not be considered an authority in this area. The mention of products, service procedures or service organisations herein does not constitute endorsement by the Club, the Cross Country Chronicle or it's Editor.



Editorial Ramblings

Hi there

Thought this picture could be worth a laugh - maybe this could be the new Remuera Tractor school bus, or else the club could get one for those outings when we take passengers (like the two coming up in the Akas in Jan and Feb).



Table of Contents

P. 4	CCVC Christmas Party
P. 5	Club Requirements
P. 6	Vehicle Inspectors
P. 6	Upcoming 4WD Events
P. 7	Christmas Jamboree
P. 8	Club Clothing
P. 9	CCVC Who's Who
P. 10	Deadwood Safari
P. 18	Club Champs Round II
P. 21	Colin James Farm Report
P. 22	North Island Challenge
P. 24	Now THIS is a co-river
P. 25	Interclub Teams Recovery
P. 29	Guy Fawkes Trip
P. 31	Trip Categories
P. 33	Trip Calendar Database

Front cover picture: A friendly fellow who is always about at this time of the year, loaded with 4WD goodies (if you've thrown out enough hints!)

Accident, Grant Kirby

It is with deep regret that I must inform you all that one of our members, Grant Kirby, had a tragic accident and was killed on Saturday Dec 3. Grant was on a private 4WD trip in Odlins Rd with one other non member friend, Peter Campion. Each was driving their own vehicles. Grants vehicle fell over a 30 metre bank. At this point the authorities have not given us any other details. Peter Campion is coming to Club night to say a few words and give us more details.

Roger Seymour





Equipment Required

In accordance with club policy, the following equipment is required on all Club trips:

1. Front and rear tow hooks, correctly fitted
2. Shovel
3. Fire extinguisher
4. First-aid kit
5. Basic tool kit
6. Kinetic rope or strop
7. Roll bar or cage for all open / soft top vehicles
8. Spare tyre and wheel changing equipment

If these items are not present in your vehicle at the beginning of a trip, the trip leader has the authority to exclude you from the trip. Details are set out in the Club's Vehicle and Equipment Inspection document. All member vehicles going on club trips must display a current club vehicle inspection sticker.

Trip / Convoy Rules:

1. The trip leader is always in charge. Please recognise their authority follow their instructions and give him / her the respect they deserve
2. No dogs or firearms
3. Guests on a Club outing are the responsibility of the Club member who invited them
4. No drinking and driving
5. Keep the vehicle immediately behind in sight. This is particularly important when you come to a turnoff. There is no excuse for vehicles taking the wrong track because of the driver in front not obeying this rule
6. Keep your position in the convoy i.e. no passing
7. Watch vehicle spacing on public roads to ensure that public vehicles can pass in safety
8. Make sure the vehicle in front has cleared an obstacle before you attempt it
9. If you must leave the convoy, inform someone
10. Respect the environment
11. Expect to provide a write-up and / or photos for the Club newsletter from time to time if you participate in Club trips.



Trip Categories

Please be aware that the trip category requirements and any *additional* requirements as detailed on the Trip Information Sheet for the trip will be strictly enforced for safety reasons. The Trip Leader is able to waive a particular requirement for a trip, if the circumstances of the trip permit. The Committee requires Trip Leaders to turn away vehicles or drivers that do not comply. The updated trip category definitions are included towards the end of the Chronicle.

It should also be noted that if a trip does not have a Trip Information Sheet in the Chronicle or it doesn't appear on the CCVC website, then it may not be an official club trip and the club insurance policy may not apply.



Vehicle Inspectors

Dayal Landy
Gold Coast Mechanical
2 Epiha St
Paraparaumu
Ph. 04 902 9244

Antony Hargreaves
Epuni Motors 1987 Ltd
2 - 6 Hawkins St
Lower Hutt
Ph. 04 569 3485

Dave Bowler
Bowler Motors Ltd
11 Raiha St
Porirua
Ph. 04 237 7251

Gary Young
VTNZ Upper Hutt
847 Fergusson Dr
Upper Hutt
Ph. 04 527 0501
or 025 686 7689

Grant Guy
Richard Blair
G Guy Motors
61-63 Thorndon Quay
Wellington
Ph. 04 472 2020

Carl Furniss
Wellington 4WD Specialists
26 Hawkins Street
Lower Hutt
Ph. 04 976 5325

Jim Johnson
Ph. 04 938 9404 or 021 389 404

Chris Stevenson
403 Ohiro Rd
Brooklyn
Wellington
Ph. 027 249 3319

NB: Please remember to call and make an appointment before turning up for an inspection!

Upcoming Events

Jan 27-30: Kaukapakapa Kaipara Coast Kaper. *Four day adventure, best of the west with Kaukapakapa School & Auckland Landrover Owners Club. Call Kaukapakapa School 09 420 5477 or Louise Hilton on 09 412 8112.*

Feb 02-05: Mahia Hunt Urewera Safari. *Family safari between Urewera National Park & Mahia. Mark Harris on 027 577 9991 or email mark.harris@meatandwoolnz.com*

Mar 11: Ramarama Fundraising Safari. *Through bush, farms, mud & purpose built tracks. Suitable for all 4WDs with challenging sections for more capable vehicles & optional night safari. Call Tony Burgess 09 298 0194, Rob Llewellyn 09 236 0644 or email burgessst@ihu.co.nz*

Mar 12: Marton Rotary Club Rangitikei Scenic Farm Tour. *Over several farms with great views and points of interest. Suitable road 4WD's but not 4WD cars. Contact Alan on email doug-law@xtra.co.nz or 06 327 8185.*

Mar 18: 4x4 Mud Challenge. *An international standard mud challenge event by 4x4 Challenges NZ Inc. Manukau City, close to motorway. Classes for up to 32" or metric equivalent road legal (non agricultural) tyres, 32" - 35" or metric equivalent road legal (non agricultural) tyres, and all others. Entry fee \$30. Contact 027 431 0923 or www.4x4challenges.org.nz*

Apr 02: NZ4WD Show. *Auckland Polo Club, Clevedon. See Sam Parker's project vehicles and much more. Contact sam at sam@adrenalin.co.nz*

Details in the column appear courtesy of Sam Parker, publisher of the New Zealand 4WD and Sportvehicles magazine. Potential participants should contact the event organiser; CCVC cannot take responsibility for any changes or inadvertent inaccuracies.

« DIESEL & TURBO »

are proud to be associated with the

Wellington Cross Country Vehicle Club

Find us at 63 - 65 Waione St, Petone
Tel: 04 568 9218 Email: Tom@dtw.co.nz



For comprehensive performance and maintenance
Products including



Available to club members on presentation of their current membership card at a

Discount of **20%** off trade

The Tararua Club, in association with the NZFWDA are planning a 4WD Jamboree over the Christmas break based at Battle Hill.

The provisional dates are:

Friday 30th Dec - Arrive and register, set up your camp

Sat. 31st Dec - Hard yakka and a shiny trip into Akatarawas

Sat 31st Dec - Possibly celebrating New Years eve

Sun. 1st Jan - Gymkana event in afternoon

Mon 2nd Jan - Hard Yakka and Shiny trips to Wellington South Coast

Tues 3rd Jan - Hard Yakka and Shiny into Tararua ranges

Wed 4th Jan - Hard Yakka into Akatarawas, Shiny trip to Orongorongo coast

Thu 5th Jan - Pack up and head home

Camp base is at Battle Hill Farm Park on the Paekakariki Hill Rd

Costs are \$15.00 per vehicle registration

Camp fees \$5.00 per adult and \$2.00 per child per night

Trip fees \$15.00 per vehicle per trip

Any registrations and queries to Stuart Barton

stuart.barton@clear.net.nz or phone 04 239 9647 (hm)

Trips above are tentative at this stage and may change



VEHICLE CLUB
Wellington

CLUB CLOTHING - ORDER

Complete Clothing Requirements
(size, quantity and totals),
Together with Delivery and Payment details and Post
or Fax to

Arrow Products Ltd

FREEPOST 3265, PO BOX 38 385, WELLINGTON

Tel (04) 589 5888 Fax (04) 569 6307

Toll Free 050 UNIFORM or 0508 643 676

CODE	DESCRIPTION	SIZE						QTY Req	Unit	TOTAL \$
		S	M	L	XL	XXL	3XL		Price \$ GST inc	
901	Striped collar Polo Shirt - Beige								36.15	
902	Black Collared Polo Shirt - Beige								41.20	
903	Explorer Jacket Black/Brown sleeves								157.50	
904	Vest Moss								60.00	
905	Polar Fleece - Black - Blue - Green								65.25	
907	Cap Black/Brown Peak								19.75	
908	Cap Linen/Black peak								19.75	
908	Beanie Black								15.00	
	Delivery								6.00	6.00
	Cheque/Credit Card charge value									

343	Brown, Lined Oil Skin Vest								89.00	Refer Paul Adams
344	Brown, Lined Oil Skin Forrester Jacket								149.00	Refer Paul Adams

ORDER AND DELIVERY DETAILS

ORDERED BY: _____ DATE: _____

DELIVERY ADDRESS: _____

PHONE: _____ FAX: _____

PAYMENT DETAILS

Please find enclosed:

☐ CHEQUE (Arrow Uniforms Ltd)

Please charge my credit card:

☐ BANKCARD

☐ VISA

☐ MASTERCARD

☐ DINERS

☐ AMEX

CARD NUMBER:

--	--	--	--	--

--	--	--	--	--

--	--	--	--	--

--	--	--	--	--

NAME OF CARDHOLDER:

EXPIRY DATE:

SIGNATURE:



Cedar Management Services Ltd

Wholesale stationery suppliers &
short-run laser printing specialists

Stationery

Stationery supplied direct to your door

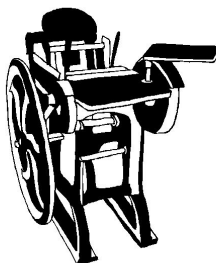
Price includes freight, courier

Prices fixed on a quarterly basis

One stop shop

No need for you to leave the office -

just phone / fax / e-mail your order to us
and we do the rest.



Printing

Business cards

Newsletters

Booklets

Advertising brochures

General photocopying -

Black & white / Colour

Contact Kerry or Debbie at:
102A Hillcrest Rd, Raumati Beach
Phone 04 905-0980; Fax 04 905-0981; Mobile 021 441-816
email: kjduncan@cedar.co.nz

The club has the following sub committees running currently

- 60k: Grant Purdie with Antony Royal, Bruce Mulhare, Eric Bon, John Vruink & Mark Wolstenholme
- Club Recovery: Rodney Bracefield
- Deadwood: Roger Seymour
- Police SAR: Jim Johnson and Gavin Holden
- Safety: Andrew Farmer with Carl Furniss, Grant Purdie, John Kowalczyk & Ray Harkness
- Trip Leaders Forum: Carl Furniss with any trip leaders who turn up
- Web Project: Mark Wilson with Andrew Farmer, Grant Purdie, Jay Montilla & Marcel van Dorrestein

The club also has the following external organisation liaison people

Akatarawa Recreational Access Committee: Grant Purdie & Giles Sullivan

Foxton Beach Coast Care: Grant Purdie & Bruce Mulhare

Friends of Belmont: Roger Seymour

Greater Wellington Regional Council: Grant Purdie & Ralph Dobson

Horowhenua District Council: Grant Purdie

Public Access New Zealand: Ralph Dobson

Tread Lightly!: Ralph Dobson

Wellington City Council: Grant Purdie & Barry Insull

KIRK MOTORS DEADWOOD SAFARI 2005

Well it's done - we held the Deadwood (that's short for the Kirk Motors Deadwood Safari thanks Andy), yesterday. The usual story - a long build up with lot's of effort by a number of people and it's all over in one short day. Well it seemed short to me, I expect it was quite a long day for the great marshals who did both morning and afternoon stints. Although both Saturday and Sunday were close to 12 hour days in the finish. The drivers enjoyed it, the NZFWDA stewards said it went well and the 2000 odd public loved it - maybe apart from the 2km walk to get in!

The Deadwood Safari - it is something special that only CCVC has. Sure other Clubs have their traditions and special events, but the event started by CCVC members all those years ago is now so well known that just saying it's a Deadwood means most people with any interest in motorsport in the bottom of the lower North Island immediately knows you're talking about 4WDing and have their own stories about it. It is a registered brand name owned by CCVC so it's truly ours.

After a few in the Club and the Committee felt CCVC should run a Deadwood two years ago since we hadn't run it ourselves for a number of years (we willingly lent to Deadwood name to Windy City and Valley 4WD clubs several times to keep the name alive), it was felt about time that CVCC ran it. The Club members agreed so a small group got together with some great ideas and booked the date, but with a disruption to the planning at the start of last year it was bravely picked up earlier this year by President Roger, who in his inimitable style unbelievably pulled it all together and we were probably all a bit stunned that it turned out so well.

Roger got the resource consent after the first offer stumbled, had his whole family working on paperwork for weeks - sending entry forms and confirmations, organised the working bees to develop the hazards and a thousand other things no-one knows about. I looked after the important input and output components - food and loo's, drawing some map's, plus marshals on the day, but a few other people deserve special mention.

Kirk Motors Mitsubishi (aka Andy Mitchell) our platinum sponsor - putting up a huge effort with radio, newspaper, posters, logos, vehicle displays, hosting the scrutineering plus key guidance to us Deadwood novices. Brian Howat for all his advice in general but the course and hazard planning in particular. Andrew Farmer who did an unbelievable job with all sort of things - organising around a hundred prize packs all donated by suppliers, setting up the hazards, arranging the CAT Unimog and a dozen other things. Larry Haines (Clare Decorating sponsor and, poor fellow, well known Nissan!! driver) who got the mugs and tee-shirts printed, organised gate staff and the money han-

(Continued on page 11)

(Continued from page 10)

ding (couldn't trust any CCVC members there!), got the safety tape and found the big marker pens for the signs etc etc etc. Jeremy Ackley - not even a Club member yet and should be given honorary membership, got all the Club volunteers together, wrote up marshal guidelines, allocated radio channels for the day, made up the Marshal packs. And definitely had the worst job of the day managing the traffic after others gave up on it and which was just chaotic due to the numbers after we ran out of parking space. Ralph Dobson for arranging the supply of the fire extinguishers from Chubb.

Thanks too to those who showed up on the five or six working bees to clear the site, those ones we thought were crazy steep hazards were all driven by lots of vehicles, even the one up the creek! David Howard - Construction Contracts, your diggers and drivers were fantastic and worked in there for three days. The Fire truck which spectacularly roared off, sirens screaming and lights flashing to a fire at Silverstream early in the afternoon - who would've believed a five ton truck could do 40kmh down that track full of people - awesome, oh and thanks for the first aid too!

Ken McAdam, who stepped in to be Clerk of the Course when we had trouble with that key role. The land belongs to Martin Bradley so of course we couldn't have done it without his help or without Andy Cockroft's generous permission to trash his training course. Duncan Grocott who cleared most of the main track one week after the forestry guys dropped their pine trees all over it and then, with Phil Foothead from Featherston, worked his winch all day to recover over 30 vehicles from two hazards. Bruce Mulhare and his recovery crew of Phil and Mark and others who took on the difficult winch jobs at the top of 28 and 29 with the mighty super winch. David Coxon who did his best to manage competitors parking both at scrutineering and on Sunday. Paul Adams for arranging the rubbish skip and wheelie bins. Marty Chung for the corflute we used for all the signs - got enough for two events. Jeff Simpson for handling all the finance seemingly effortlessly. It's dangerous naming people because you hate to miss anyone and there were definitely others who put in a special effort (I hope you got your free lunch!) But if I've left you out I apologise and thank you for your efforts.

We also need to thank Valley 4WD Club for lending us their pegs and trailer and Windy City for the hazard numbers - both were essential and it was a great help not to have to buy or make them.

After 10 days of fine summer weather the rain arrived on Thursday night and came down solidly on Friday. The forecast was good but who ever believes that! But this time they were right - it cleared a bit on Friday, Saturday got rid of the rest and Sunday was perfect after just enough rain to re-wet the

(Continued on page 12)

(Continued from page 11)

ground. Enough to make it fun with the Super-Loo truck placing the toilets - we had to tow the truck along with two vehicles three times to get to the end of the site and back, which John the driver wasn't bothered by at all. We managed to give him a family pass so he got the family along on the day to watch and then picked the loos up on Labour Day to boot. The rubbish skip and wheelie bins finally showed up Saturday afternoon after Paul unsuccessfully rang everyone but the Managing Director - we thought they were late but the truck driver had his schedule and was right on time at 3.00pm.

I didn't see any of the scrutineering held at Kirk Motors Lower Hutt branch but understand it was a bit more interesting than intended as with 72 vehicles all arriving on a trailer (so effectively 144 vehicles), and drivers who didn't always follow or know our instructions, they were all over the road in Rutherford Street at times. Apparently U-turns in the middle of the street, oops - was that a median strip? and a bit of friendly interest from a Traffic Officer was all part of the day. Not sure what time it finished but it was well past the 5.00pm schedule.

So what happened on the day? We started on time around 9.00am, there was the initial sorting out period as competitors found their starting hazard and it was just all go the rest of the day. Might be best to look at the photo's as it's difficult to describe the action. There were early casualties but less than 10 vehicles failed to complete the day - many with the usual extraordinary patch up work to keep them going. Pedro and Marcel replaced two CV's - well why wouldn't you when it only takes 15 minutes! Unfortunately Mark Stockler and Andy Mitchell lost rear wheel drive and couldn't fix it, Dave Hilliard recovered from being upside down on a downhill section to completed the day. Hazard no 12 had vehicle after vehicle upside down - the hazard was only 20m long but had an ugly hole and climb at the end. Out of 70 vehicles only Theo Spanbroek cleared it and to avoid reversing into the hole and rolling, roared on up a seriously steep bank through the trees and onto the road - spectacular! Smiling Steve Lacey had a great day in the Suzuki and finished well. Brian Howat did well in the Range Rover winning his class (OK so there was only one entry in B Class but who's fault

(Continued on page 14)

COOPER



TIRES

"Americas Most Trusted Tire"



Firestone

BRIDGESTONE

Tyres, Springs, Shocks and Lift Kits are now available from Firestone Direct in Petone.

Contact Phil on 568 5045

Are you a new member? Do you get the News emails from the club? Do you have access to the club's website memberzone? If not then have a word with a committee member as these are all ways in which the club communicates with it's members.

Some useful email addresses are:

Webmaster@ccvc.org.nz (general web site queries)

Lists@ccvc.org.nz (contact the person who administers the list servs)

Trips@ccvc.org.nz (contact the Trip Coordinator)

Newsletter@ccvc.org.nz (to send stuff to the newsletter editor)

Database@ccvc.org.nz (contact the membership database administrator)

Access@ccvc.org.nz (contact the Chairman of the Land Access Management Committee)

NZFWDAdelegate@ccvc.org.nz (contact the NZ Four Wheel Drive Association delegate)

Treasurer@ccvc.org.nz (contact the club treasurer)

Welfare@ccvc.org.nz (contact the club welfare officer)

Please note that if you would like to receive club news announcements from news@ccvc.org.nz and have an e-mail account, then drop our database administrator an email on database@ccvc.org.nz and you will be included on the news list. Note that this is not an automatic thing, you need to ask.

In
Association
with

G Guy Motors

4WD Specialists

- 4 x 4 Accessories
- Cooper Tires
- Service & Repairs



472 9565

gguy.motors@extra.co.nz

61 Old Hutt Rd, Thorndon, Wellington, N.Z.

SNATCH MASTER

high elongation nylon recovery straps

100% New Zealand made

Bring in your club membership card and receive 15% discount off our Snatch Straps, Shackles and Chains.

Standard lengths 6.0 metres & 9.0 metres with special lengths manufactured to order in either our Auckland or Christchurch factories.

Minimum breaking load 8,000 Kgs
Offers similar elongation to nylon rope, but requires less storage space.

Described by users in trials as 'magic, the best product I have ever used!'

Manufactured by **COOKES**
in association with **DONAGHY'S**

**AUCKLAND
FACTORY**

6-10 Greenmount Drive
East Tamaki
09 274 4299

**WELLINGTON
BRANCH**

2 Udy Street
Petone
04 568 4384

COOKES & TWL BRANCHES THROUGHOUT NEW ZEALAND

(Continued from page 12)

is that?), but take it easy on the trees please - no 24 was a bit rough Brian.

Hazard 5 was too tough for most, 27 was an impossible climb but on which quite a few got to the top. No 11 broke the first two vehicles to attempt it. Hazard 18 had a nasty little step which had a few vehicles flip over backwards. 21 we should've had the red pegs up higher on the sidling as it was too easy, the cross-axle challenge 22 wasn't run as it was a tough one and we were too short of time to have one with lots of recoveries and delays. You could tell where the hard ones were as they had a big spectator crowd and a bigger cheer when a competitor made it all the way through - that's got to make the drivers feel good!

While we were setting up on Saturday a local who had seen some advertising and noticed the activity, walked the two km into the site to see what was going on. His name was Peter and he'd been competing in 4WDing about 30 years ago. Once he found out the Deadwood was on on Sunday he left us alone and I thought he'd gone home. About three hours later he's still there - he walked and studied every single hazard. When I gave him a lift out at 6.00pm he was still excited and said he'd be in first thing in the morning and there until the last truck left. Sure enough I saw him often on the day, totally focussed on the action - it's one of the things that makes the effort worthwhile. Although I did notice he was following that Nissan around so maybe he'd been upside down a few times too many.

(Continued on page 15)

(Continued from page 14)

At one stage I ran a competitor back to the pits to get oil after draining the engine oil through the top of the motor (oh yes - upside down again). I had to take Roger's Nissan - a bit of a step up (literally) from Leroy, what a monster! Didn't know what gear I was in but it didn't seem to matter - it just went faster or slower! Good though because the spectators on the road could hear us coming and cleared out of the way - I don't get that sort of respect in Leroy. It scared little kids who scattered like rabbits - one little boy, probably eight and on his own, got a fright as we came back out of the pits and didn't know which way to go. We were hardly moving and he finally got to the side of the road, but he didn't like it and as we went past he shouted "DICKHEAD!" That's the attitude eh. But how did he know that about my passenger?

We didn't have anyway of counting spectators but estimate there was probably well over 2000 people on the site during the day including 100 volunteers and possibly 250 in the competitor retinue.

The aftermatch, well Awards dinner, was at Petone Working Men's Club. Actually first it was, then it wasn't, then it was, people were ringing to book and being told it was cancelled a day beforehand - "OHMIGOD!" shouted Roger, "Does everyone there just do whatever they feel like, who do I need to talk to to get this sorted out!!!" With no experience of this event he didn't want to over commit on numbers and initially booked for 50. We had 170 people there last night! The PWMC told us we cleaned the kitchen out of food which was just perfect as the restaurant wasn't open the next night. The prize packs were great and well appreciated. We sold a few more tee shirts but have plenty left and they'll be available for sale next Club night.

Not knowing quite what to expect or being great public speakers we didn't make the most of the opportunity to remind people how special the Deadwood Safari is and to thank the drivers for their part in making it a great event. They're dedicated to the sport - leaving Whangarei at 4.00am Friday morning to get here for scrutineering on Saturday and then having to drive all that way back home is impressive. Makes a sport where you can fly to a venue to compete and fly home again look like a soft one.

Now Monday 2.30pm - just got back home after the clean up. The weather makes such a difference to outdoor events and we were expecting fine weather again today. Woke up about 6.00am to the sound of gentle rain - Bugger! How are we going to get the loos out? But it still looked OK up the valley, I thought optimistically. Anyway, headed off in Leroy (thought 4WD might be useful), to get there at 9.00 by which time it was pouring down in Lower Hutt. Roger had rung grizzling about it by then! The rain eased as I

(Continued on page 16)

(Continued from page 15)

headed up the valley and Upper Hutt was completely dry (does that ever happen?), and didn't look like raining so I called Super Loo to get them there ASAP. It didn't rain on the site until a heavy shower came in as the front finally reached us just as we were finishing up at midday.

The clean-up went really well thanks to Duncan, Simon, Geoff, Gen, Mitch and Jeremy. There was really very little rubbish, we got the pegs on the trailer in quick time and the digger tidied up a few hazards before leaving (and made a proper pond out of the duck puddle - we probably won't be able to use it as a hazard again!). All over including the shouting. A roaring success although we don't know the financial situation yet, and lot's of "lessons" learnt (although most of these would be solved by having more people willing to get involved in the planning). Who wants to do it again in two years time?

Neil Blackie

Welfare - this just missed the November Chronicle so is a bit late but better late than never. Club member Peter Clemas had a wee oopsy with his Isuzu Mu - seems it fell over, did lots of damage and was subsequently written off. Bad luck Peter, hope you find another set of wheels soon.

VEHICLE SERVICING AND REPAIRS
DIESEL AND LIGHT ENGINEERING SPECIALISTS



Dayal Landy
2 Epiha St.
Paraparaumu

Ph: 04 902 9244
Fax: 04 902 9243



Stockists of
Black Rat
Recovery
Equipment

CCVC would like to thank the following sponsors for their support and help in running the 2005 Deadwood Safari:

Event Sponsor:	Kirk Motors Mitsubishi
Supporting Sponsors:	Valvoline, Clare Decorators, Seyclean Schoools, Enzed, Chubb, Contract Con struction, Resene Paints, Repco, Collins Motors, Cookes, BNT, GT Nissan, Wurth, Diesel and Turbo, TWL.

A woman takes a lover home during the day while her husband is at work. Her 9 year old son comes home unexpectedly, sees them and hides in the bedroom closet to watch. The woman's husband also comes home. She puts her lover in the closet, not realizing that the little boy is in there already.

The little boy says, "Dark in here."

The man says, "Yes, it is."

Boy - "I have a baseball."

Man - "That's nice."

Boy - "Want to buy it?"

Man - "No, thanks."

Boy - "My dad's outside."

Man - "OK, how much?"

Boy - "\$250"

In the next few weeks, it happens again that the boy and the lover are in the closet together.

Boy - "Dark in here."

Man - "Yes, it is."

Boy - "I have a baseball glove."

The lover, remembering the last time, asks the boy,

"How much?"

Boy - "\$750"

Man - "Sold."

A few days later, the father says to the boy, "Grab your glove, let's go outside and have a game of catch. The boy says, "I can't, I sold my baseball and my glove." The father asks, "How much did you sell them for?" "\$1,000" The father says, "That's terrible to overcharge your friends like that...that is way more than those two things cost. I'm going to take you to church and make you confess." They go to the church and the father makes the little boy sit in the confession booth and he closes the door.

The boy says, "Dark in here."

The priest says, "Don't start that shit again, you're in my closet now."

CCVC - Club Champs Round II Results.

Name	Class	1	2	3	4	5	6	7	8	9	10	11	12	13	14	15	16	Total
Peter Osborne	Modified	0	0	0	0	0	0	0	0	0	0	0	0	0	0	0	0	0
Brian Howat	Modified	0	0	0	0	0	0	0	0	0	0	0	0	20	0	0	0	20
Andrew Farmer	Modified	0	0	0	20	0	80	0	0	20	20	0	0	0	0	0	0	140
Mitchell Seymour	Modified	0	0	0	0	0	80	0	0	20	20	40	0	0	0	0	0	160
Roger Seymour	Modified	0	0	0	0	0	80	0	0	20	20	60	0	0	0	0	0	180
Marcel van	Modified	40	0	0	0	0	80	60	0	0	20	0	0	0	0	0	0	200
Antony Hargreaves	Standard	40	0	0	0	0	80	40	0	40	0	60	0	0	0	0	0	260
Kane Hargreaves	Standard	0	0	0	0	0	80	60	40	20	0	60	0	0	0	0	0	260
Marty Chung	Standard	0	0	0	0	0	80	0	0	0	0	80	0	0	0	60	60	280
Steve Mercer	Standard	60	0	0	0	0	80	0	0	0	0	0	60	0	80	0	0	280
John Bryant	Standard	60	0	0	0	0	80	0	0	0	100	0	0	0	80	0	0	320
Grant Kirby	Modified	0	0	60	0	0	80	0	0	0	20	60	0	80	80	0	0	380
Bruce Wilson	Standard	60	0	0	0	80	80	40	0	100	20	60	0	0	0	0	0	440
Phil McConville	Standard	0	0	40	0	0	60	60	0	100	100	60	0	40	0	0	0	460
Thom Botterill	Standard	60	0	60	0	0	100	0	100	0	0	60	0	0	80	0	0	460
Gary Rowden	Standard	80	0	0	80	80	80	40	0	100	0	60	0	0	0	0	0	520
Andy Rowden	Modified	0	0	60	80	80	80	40	0	100	40	60	0	0	0	0	0	540
Dudley Harris	Modified	60	0	60	0	0	80	0	0	0	80	60	80	80	80	20	20	620
Jay Montilla	Standard	0	0	80	100	100	80	0	0	20	20	60	20	80	100	20	20	700

CCVC - Club Champs Current Series Placings.

<u>Name</u>	<u>Class</u>	<u>Round 1</u>	<u>Round 2</u>	<u>Total</u>
Brian Howat	Modified	140	20	160
Mitchell Seymour	Modified	130	160	290
Roger Seymour	Modified	170	180	350
Kane Hargreaves	Standard	110	260	370
Marcel van Dorrestein	Modified	220	200	420
Antony Hargreaves	Standard	180	260	440
Andrew Farmer	Modified	310	140	450
Marty Chung	Standard	480	280	760
Jay Montilla	Standard	680	700	1380
Peter Osborne	Modified	1600	0	1600
Grant Kirby	Standard	180	1600	1780
Eric Dodds	Modified	230	1600	1830
Steve Mercer	Standard	1600	280	1880
John Bryant	Standard	1600	320	1920
Ash Senior	Modified	360	1600	1960
Warren Perry	Standard	360	1600	1960
Ben McLardy	Modified	370	1600	1970
Grant Kirby	Modified	1600	380	1980
Phil Senior	Modified	400	1600	2000
Antony Royal	Modified	420	1600	2020
Bruce Wilson	Standard	1600	440	2040
Phil McConiville	Standard	1600	460	2060
Thom Botterill	Standard	1600	460	2060
Turoa Royal	Standard	500	1600	2100
Gary Rowden	Standard	1600	520	2120
Andy Rowden	Modified	1600	540	2140
Miria Royal	Modified	540	1600	2140
Peter Murton	Standard	560	1600	2160
Paul Bretherton	Standard	610	1600	2210
Angela Murton	Standard	620	1600	2220
Dudley Harris	Modified	1600	620	2220
John Parfitt	Standard	780	1600	2380
Gerard Kelly	Standard	1250	1600	2850

Club Member Trades, Services and Supplies

Bernie McCosker - 15% discount off retail for members licence upgrades and endorsements from an LTNZ approved course provider. 021 104 1783.

Clare Decorators Ltd - House painting (interior / exterior), wallpapering, water blasting. Will do commercial also. Discount offered to club members. Ph Larry on 567 0902 / 025 538 525

Murton's Timbercraft - Custom made furniture and specialists in the restoration and repair of wooden boats. If it's made of wood then Peter (boat builder / carpenter / joiner) can make or fix it.

Murton's Motor Camp - situated in Porirua, handy for when friends and family need somewhere to stay. Ph 04 235 9599, email info@murtons.co.nz or visit www.murtons.co.nz

Nadir Outpost, Tokanui - backpackers homestay in the Catlins region of Southland. Contact the Tilby's on 03 246 8544, email nadir1@ihug.co.nz or visit www.geocities.com/nadir_outpost

Tinakori Joinery Company Ltd - for all your joinery requirements. Ph Barry on 920 0005 or email tinakori@xtra.co.nz

Viking Lodge Motel, Dannevirke - looking for a place to stay in Dannevirke? Then look no further, give Pat Bennett a call on 0800 279 271

I'm sure that there must be club members who would like some free advertising, so if you own your own business and would like it mentioned on this page, then please contact the editor on 564 3045 or (preferably) email newsletter@ccvc.org.nz

CZ News

Tararua Jamboree- Will be held at Battle Hill 30 Dec to 5 Jan. They need a club to a trial/gymkhana on New Years day and a few hard yakka runs. Contact Stu Barton if you can help out. Offroad Wairarapa are willing to run a trip through Sutherlands track.

Vehicles on beaches, Peter Vahry made a presentation at conference about vehicles on beaches, and made these recommendations.
There are several things we can do immediately.

1. Be aware of local Council activity relative to vehicles on beaches.
2. Avoid driving in places and manners that will create community concern
3. Become involved with Councils as community groups
4. Be ready to stand up and argue for the use of vehicles on beaches for recreation.
5. Consider advocating for the creation of a management body similar to the Fish and Game Council with responsibility to government.

Foxton beach, Local residents have asked the Police to control vehicles in the Bowls area. Their plans are to limit the area to organized club runs with registered vehicles.

CZ Teams Recovery cup, Tararua is in the process of organizing the next CZ team recovery challenge which will be in Shannon in March/April 06, Phil Barnard is chief organizer at this stage.

Makara wind farm, Ken Mcadam still waiting to make NZFWDA submission to WCC at the Resource Consent hearing.

FASTLANE TYRES



BF Goodrich
TAKE CONTROL™

14 Hopper St, Wellington

PO Box 6817

Ph 384 4363 Fax 384 4163

Opening Specials (Sept - Oct)
Cash and Carry

31 x 10.5 R15 AT \$258 incl

31 x 10.5 R15 MT \$288 incl

32 x 11.5 R15 MT \$318 incl

33 x 12.5 R15 MT \$368 incl

265 75 R16 AT \$298 incl

265 75 R16 MT \$328 incl

Other sizes and brands on request

Trip Report – Colin James Farm 06/11/05

We met at the farm, in Whitemans Valley at 8.30am only about 12 vehicles on the trip, so at least it would be a trip with few hold-ups. After a short drivers briefing, we were told that we would be doing another short track down the road first, before returning to do the track we were all there fore. Apart from a very narrow culvert to cross & a steep little climb on the other side, the first track was more of a scenic drive, about an hour later we were back at our meeting point and heading onwards and upwards.

As a result of the long dry spell we were having, we were climbing steep grassy tracks with relative ease which I am sure would have been near impossible if the ground had been wet. Before long we arrived at our first mud-hole, which I think everyone managed to get through without too much trouble. From there we were taken to some side tracks and challenging obstacles which we all had a go at, some more-so than others.

The only casualties of the day, was our trip leader Antony Royal, with a broken engine mount and Roger Seymour's son who managed to break a drive shaft, on I think the fourth attempt at a steep climb up to a side track. After lunch Roger & Eric Dodds headed off early with Mitchell's Suzuki, which now only had front wheel drive, the rest of us headed up to the top ridge, were we

(Continued on page 22)

(Continued from page 21)

had great views across Upper Hutt right out to Wellington. We arrived back at the starting point at about 4pm.

Many thanks to Antony Royal & Colin James for a very enjoyable day.

Brent Reddin

GET INTO KIRK MOTORS AND GET OUT WITH A BLACK RAT



TOWING KIT



BOW SHACKLES



DRAG CHAIN KIT



SECURITY CHAIN KIT



TYRE COVER



TRUNK PROTECTOR

Black Rat is a range of tough-as-nails 4WD recovery and recreational equipment. From Recovery Hoists to Snatch Straps to Towing Kits, Black Rat has the gear you need to get your 4WD back on the straight and narrow. Come in and see our full range of reliable Black Rat gear, and collect **10** Bonus Fly Buys Points on any Black Rat purchase.



**Kirk Motors
Mitsubishi**

375 High St, Lower Hutt

Tel (04) 566 3903

75-78 Cambridge Tce, Wellington

Tel (04) 385 9508

North Island Challenge - Trip report by David Coxon

Not as hard-core as it sounded, this was a Family Shiny trip following the coast from Glendu Station to Caladonia Station then through Homewood Station back to the Riversdale road. For those who are geographically challenged, this was a chunk of coastline north (up) from the normal White Rock / Tora trips.

After an 8:15 departure from the Hutt Valley, I met nine other trucks at the usual Featherston rendezvous for a briefing from Ron. He warned us that he was relying on a few notes and his memory of the North Island Challenge trip he did about five years ago, so we might take a few wrong turns. There were also a few comments about the small turnout for a new trip. Those

(Continued on page 23)

(Continued from page 22)

who decided not to join us missed a good day out.

A one hour drive took us through Martinborough and on to Glendu Station where we aired down to tackle the coast. It was very dry for the trip and all the mud bogs had set into axle jolting ruts, making for an easy but bouncy trip. While the track mainly followed the coast, it climbed up over a few slips and bluffs, some of which were a bit steep or very close to the track and rather undercut. We finally reached a very nice looking hut under construction, with an obvious track leading up the hill.

This proved to be very overgrown and quite steep and narrow, but not too difficult. We stopped at one point while someone in front was unstuck, and without thinking too much about it I rolled forward across a rut. This proved to be deeper and slipperier than I expected and I got cross-axled. No big deal I thought and rolled back a bit for another attempt – still not enough momentum so roll back further and try again. This time when I planted boot I went BACKWARDS. I leaned on the brake and checked the gear shift – yes it was in D not R. I tried again. Further back. Getting out to look at the situation I saw that the only wheels with any ground contact were in the soft slushy stuff and as I set off they spun, and loss of traction meant I went back downhill not forwards. I was now getting quite concerned about the drop off behind me (only half a metre away) so I opted for a quick stop to get me over the rut. I was soon hooked onto the vehicle in front and pulled clear of the rut, but when I tooted to say “OK stop”, he kept going, taking me on a rather wild ride through the next slippery section of track as well! At least this saved me driving it.

I disconnected the stop and taped up the rear wheel arch trim that had been pulled loose on a bank on the way up then we carried on up the hill until Ron came to a stop. We all wandered up to see what was happening and enjoy the view over the coastline. The problem was that the track had petered out, however the view included the real track, clearly visible several hundred metres below us on the coast – Oh dear! Although this would have been an ideal place for lunch, we decided to return and find the real track before stopping. The trip back down to the hut was uneventful except for Ray dropping a wheel into a hole and needing a quick stop backwards. A bit of exploring soon had us on the right track and into a nice clearing where we stopped for a late lunch.

There was some concern over the amount of track still to go, so after a reasonably brief lunch stop it was back on the track again for an easy and quite quick section through to the start of the road. Along the road for a few kms to Caladonia Station then into the hills. This was the part of the trip that we

(Continued on page 24)

KING TOYOTA

"Where customers become friends" LAND



**Providing community support
for more than 25 years,
while selling & servicing
all makes and models**



**We offer an extensive range of
New Cars, Signature Class vehicles
and Quality Used Vehicles.**



PHONE 920-7770



Ron's instructions talked about going through three gates at the stock yards. There was the choice of going through the paddock in front of us (2 gates – one in and one out) past the old stockyard, or working our way through six gates



(Continued from page 23)

were not going to do it if it was wet, and I could see why. The track was a muddy strip around the hills, often sloping towards some rather interesting drop-offs – not quite precipitous but steep enough to be dangerous, and with no raised edge. In dry conditions there was plenty of traction but in the wet it would be like driving on slippery ice, and running off the track would have been VERY exciting. I am very glad that we did get here though, because the views back over the coast from the hills were excellent.

Somewhere in the middle of nowhere we crossed over from Caledonia to Homewood Station and were now on the home run (no pun intended). At this point

(Continued from page 24)

in the new stockyard then driving round the paddock. After considerable deliberation Ron chose the six gate option. We followed the fenceline to the gate at the far end of the paddock we didn't to rejoined the track and head for the Riversdale road.

After a quick coffee while airing up, it was off to Carterton and all points south following some very scenic backroads.

I finally got home at 7:15 making it an 11 hour day. Better than staying home and mowing the lawns.

TARARUA 4WD CLUB

Central Zone Inter Club Teams Recovery Challenge

Where: Johnson farm Shannon TBA

When: Saturday 1st April 2006

Drivers Briefing: 10.30am

Start time: 11.00am

Sunday 2nd April 2006

Start time: 9.00am

Entry Fee: \$80.00 per team

Camp out & BBQ on site Saturday & Sunday night.

Maximum 10 teams can enter so enter your team

A.S.A.P!

Port-A-Loos on site!

No pets!!

Contact Phil Barnard

Ph: 04 2970740

Mob: 0274 533055

TARARUA 4WD CLUB

Central Zone Inter Club Teams Recovery Challenge

This event has been arranged for the enjoyment of all. It will be competitive and is designed as a Club truck event. There may be marshals on each hazard to help time each section and to keep score.

The hazards can be extremely dangerous if not approached correctly.

Safety is paramount at all times. Please watch for spectators and observe the marshals directions.

- Teams must consist of three or more vehicles. The vehicles can be of any design.
- This is a timed event. The stopwatch will start as the first vehicle crosses the start line and stopped when the last vehicle crosses the finish line. If all vehicles don't complete the course in the allocated time, a DNF will be entered in to the scorecard.
- The winners will be found by adding the total time of all completed hazards together. The faster time will be the winners.
- Competition rules apply with pegs. Start at the blue pegs, finish at the blue pegs. Red pegs are to be kept on the right and yellow on the left.
- It is allowable to exit the course as long as the vehicle re-enters at the same place or back towards the start pegs.
- Teams may not lay out gear before the start but may walk to hazards to plan recovery techniques. 15 minutes per hazard is allowed for planning.
- There is 60 minute cut off time for completing the hazard. At the 60 minute mark, please put a DNF on the scorecard plus include the number of vehicles that have completed the course, if any. This may help in a count back situation.
- It is preferable for at least one vehicle to have a mechanical winch but not mandatory. Please ensure all safety measures are taken when winching.
- All recovery gear used during the hazard must be back in the vehicles before the clock stops with drivers and navigators in the seats with belts on.
- Not all recovery gear has to be used for each hazard, but what you start with you must finish with.
- Any form of recovery can be used as long as it is done in a safe manner.
- More than one vehicle can be in the hazard at one time but each vehicle must complete the hazard in the order they started.
- Penalty points will be given for unsafe practices, i.e.: one minute penalty

(Continued on page 27)

(Continued from page 26)

for standing in a unsafe position, unsafe joining of ropes, not wearing winch gloves, not using tree truck protectors etc.

- Drivers and navigators must start with seat belts on and the clock stops when all gear and passengers are back in the vehicle with seat belts on.
- Helmets must be worn by drivers at all times when timing is in place, navigators wearing of helmets is optional.
- Each hazard will have its own directions and number on the start pegs.
- Starting hazards will be done by random draw. At the completion of each hazard the team will have there scorecard marked by the marshal. Then move on to the next consecutive number. If this hazard is in use and looks like there may be a long wait, you may jump on to the next one not in use.
- You may watch another team complete a hazard as long as you do not interfere.
- You may replace a vehicle with another similar vehicle during the event as long as the replaced vehicle has been incapacitated. This means broken! This can only be done at end of a hazard and not during. The additional vehicle must also be registered as part of the team at the beginning of the event and must have had signed off from scrutineering.
- If you do not replace a vehicle with another one, you may choose to put one of your team members' vehicle through twice to make up the three vehicles having to complete the course.
- Each team should be on hazard site ready to start Saturday by 11.00am.
- The hope is that each team completes four hazards on the Saturday with the remainder on the Sunday. Start time for Sunday is expected to be 10.00am at camp site.
- At the end of each day please return your scorecard to Phil Barnard.

If you have any questions throughout the day please contact Phil Barnard on club radio.

Please remember that this is a working farm and it is only with the generosity of the landowner that we are able to enjoy our sport. If you open a gate, please close it after you.

Anybody found to be causing a nuisance of themselves may find that they will be asked to leave with their team forfeiting their score.

Committee Highlights

Foxton Beach:

The Coast Care Society is in danger of folding and Grant Purdie, as it's

(Continued from page 27)

chairperson, is seeking club members to assist in keeping it going. The society has been very valuable in preserving our access to the Foxton area and if anyone can assist please urgently contact Grant.

New Members

Terry Hughes	Patrol
Thom Botterill	Discovery

Club Recovery:

A sub committee is currently putting together a proposal for building a recovery structure for the club. This will range from the overdue club trip, the recovery of individual club members to full Search and Rescue. More to be heard on this in the new year.

Membership Cards:

These have not yet been produced but it is intended to do so as soon as possible.

NZFWDA:

Reminder of the Jamboree at Battle Hill over New Year.
Association membership cards are due to be issued prior to Christmas.

It's Tough Getting Old (Pt I)

A very elderly gentleman, (mid nineties) very well dressed, hair well groomed, great looking suit, flower in his lapel smelling slightly of a good after shave, presenting a well looked after image, walks into an upscale cocktail lounge. Seated at the bar is an elderly looking lady, (mid eighties). The gentleman walks over, sits along side of her, orders a drink, takes a sip, turns to her and says, "So tell me, do I come here often?"

It's Tough Getting Old (Pt II)

An elderly gentleman had serious hearing problems for a number of years. He went to the doctor and the doctor was able to have him fitted for a set of hearing aids that allowed the gentleman to hear 100%. The elderly gentleman went back in a month to the doctor and the doctor said, "Your hearing is perfect. Your family must be really pleased that you can hear again." The gentleman replied, "Oh, I haven't told my family yet. I just sit around and listen to the conversations. I've changed my will three times!"

It's Tough Getting Old (Pt III)

Two elderly gentlemen from a retirement centre were sitting on a bench under a tree when one turns to the other and says... "Slim, I'm 83 years old now and I'm just full of aches and pains. I know you're about my age. How do you feel?" Slim says, "I feel just like a new-born baby." "Really! Like a new-born baby!?" "Yep. No hair, no teeth, and I think I just pissed my pants."

Guy Fawkes Trip - 2005

Not sure how it happened but I seem to have a trip report sitting here on screen for the Guy Fawkes trip. Also had a couple of rums and plagiarised a poem (*Sorry, but due to space constraints we will have to wait for the Feb Chronicle for the poem - Ed*), to make it a bit more.

When you go out and look at your car on the morning after a trip and think 'I have got to put it though the car wash', you know it has been a good trip. But when you ask your wife if you can buy a waterblaster it has been an awesome trip! (For the record she said "No!" but if I drop enough mud on the drive way I think she will come around). But I suppose I should mention how I got to be asking for a waterblaster.

It was November 5th and the adventure started 13.30 at the Old Makara Service Station. For some reason I envisaged a leisurely trip out to Plastic Bay and then a short trip before settling down for a BBQ and some fireworks. It turned out to be the most fun since Driver Training!!!!!!

We did the initial run out to Terawhiti Station and over the hill to the Karori lighthouse, where we stopped for afternoon tea. The cloud was breaking but a boisterous nor'wester was coming in and conversation turned to whether it would turn to the south and new mud tyres (that Owen and Liz had fitted that morning). After a short break, some envious looks at the training bowl and Dave showing me on a map where we were and where we were going we headed off to the Met Service Radar station.

On the way I got to follow Ron for a while and it was good to see the line he took and how he applied the power when he was climbing, he just seem to always have enough momentum to roll over the next rise. This was not to last to long as we came to a gate and having the choice of opening it myself or dragging my daughters head out of a book and back to reality and sending her, I decided to kiss goodbye democracy and send Michelle. She did a great job, even going back to open the gate (after shutting it) for tail-end-Charlie who was too far back for her patience.

We were still heading up to the radar station, now second from back and got to watch a number of trucks doing the climb. It was interesting to note that it was more vehicle placement rather than tyre type that seemed to indicate how easy or hard it was on the vehicles to get up. I learnt another lesson here watching some of the drivers going hard at the hill and ruts, all they did was start porpoising and hopping into the hollows dug by previous trucks. So I resisted my natural urge to bury the boot and just pointed the Disco at the hill, applied some gentle gas and seemed to climb up without any problem.

The view was stunning across to the south island and it was a chance to talk to some of the other drivers about their vehicles and some of the trips they had done. From here we went down to Cable Bay and it seemed so strange

(Continued from page 29)

to find this piece of tarmac in the middle of nowhere. The kids had decided that my driving was a bit erratic so Stacey jumped into the front and started giving me directions about where I was to travel on the track, didn't seem any less bouncy to me, but we did not get stuck so she must have done a good job.

As we left Cable Bay there is a tight left hand corner on to the track up the hill and this seemed to cause a number of vehicles some trouble and gave us the opportunity to hassle Owen and Liz about their new mud tyres and whether the tread was painted on or not. We then arrived at what I believe was Baker's Bay and a chance to play. After putting on hooks, new tyres, extinguishers, buying strops, and first aid kits here was a really nice mud bog that gave us a chance to have some Riotous Fun. As always I forgot to shut the sunroof and got a growling from the kids when the mud started coming in. After being restrained on some of the climbs it was great to have the V8 bouncing off the rev limiter. It did not stop me getting stuck, but at least I did it making noise!!! Got to use the hooks and the tow strops both as a victim and rescuer. What a blast.

I know we did more and the kids gave me a hard time for taking the wrong line but the smile was stuck on my face – much like a chimpanzee that had just discovered the joys of flicking poo through the bars of his cage. Shortly later we arrived at Plastic Bay and drove down from the south end to see the marquis all set up, before I new it we were sitting on the grass enjoying a BBQ and some great conversation, thinking 'can the night get better?'. Too right it can.

An adults Bonfire, and a kids fire to toast marshmallows and light sparklers. It was great sitting in the log amphitheatre gossiping away and kids cuddling in for some warmth from the bonfire. The wind died and this set the stage for our own mini fireworks spectacular.

Oh, thanks Tromp for the advice about the winch. I mentioned that I do not need it to my wife, and she also crossed off the new front bumper (to hold the winch) and the suspension upgrade (for the extra weight of bumper and winch) off my Xmas toy list. Gosh, it is hard being a guy!!! I think I might still have a chance at the waterblaster if no one mentions the coin operated one at the service station.

Thanks to Ron, John and all the club members who not only help organise the events but keep us novices out of trouble.

Oh, and merry xmas to you all

Thom Botterill - Blue Disco

And soon to be member (if Paul A, myself and a membership form ever end up in the same place SYMBOL 74 if "Wingdings" is 10)



Orange Hut in the Akatarawas after the fire.

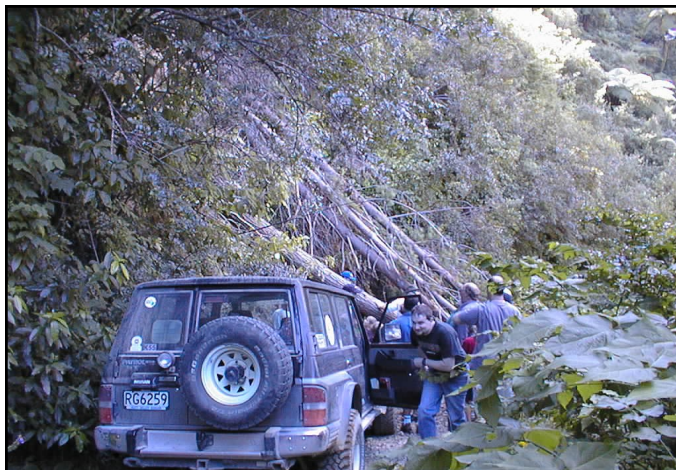


Odlins Rd work party camp out

Odlins Rd in Winter



Gardening
Gardening
And
More
Gardening!





Above: Who are the locals & who are the visitors?

Below: I wonder why it's called "Plastic Bay"?



“I’m not
stuck, I’m just
having a brief
pause!!!





Trip Categories

Family Shiny:

Description: Family trip. These trips will be straightforward and will usually include some degree of guidance in driving techniques as necessary.

Drivers: Particularly suited to family outings and drivers new to off-road driving, this category is also open to anybody who enjoys this style of trip.

Members: Anybody is welcome, especially prospective new members.

Vehicles: An important objective is minimal challenge and minimal risk to vehicles. Club safety equipment is mandatory for club members; it is not mandatory for non-members although it is recommended for vehicles once their drivers have participated in one or two trips. All open or soft-top vehicles must have a roll bar or roll cage.

Shiny 4x4:

Description: More difficult family trips, for shiny wagons and drivers *with some experience* who want more challenge and don't mind minor bush marks etc on their vehicles.

Drivers: Must have some experience, preferably from the driver training provided by the club.

Particularly important are experience in stopping, failed hill climbs, steep descents and sidings.

Members: These trips are for members only. Prospective members and visitors are welcome if they can demonstrate to the Trip Leader they are members of another club and have adequate experience.

Vehicles: Vehicles must have mud tyres, tow hooks and all the required equipment per the club's document "Vehicle & Equipment Inspections". This applies to all vehicles on the trip. All open or soft-top vehicles must have a roll bar or roll cage.

Club 4x4:

Description: Challenging trips, for experienced drivers. There will be steep and challenging terrain, modestly deep water and mud, likelihood of bush marks.

Drivers: Must have experience beyond that required for Shiny 4x4 trips, including water crossings and vehicle recovery.

Members: These trips are for members only. Prospective members and visitors are welcome if they can demonstrate to the Trip Leader they are members of another club and have adequate experience.

Vehicles: Must have mud tyres, tow hooks and all the required equipment per the club's document "Vehicle & Equipment Inspections". This applies to all vehicles on the trip. Accessories such as high-lift jacks, externally mounted spare tyre, bush bars and multiple jacking points are of advantage. Winches are often particularly useful. Generally a short wheelbase vehicle is better suited for the tight tracks. All open or soft-top vehicles must have a roll bar or roll cage.

Hard Yakka:

Description: Difficult trips with very challenging terrain and surfaces, where winching, digging, and vehicle damage are all a possibility!

Drivers: Experienced drivers only.

Members: These trips are for members only. Prospective members and visitors are welcome if they can demonstrate to the Trip Leader they are members of another club and have adequate experience.

Vehicles: As per the Club 4x4 category. In addition, a roll-bar or roll-cage is recommended for all vehicles on Hard Yakka trips. All open or soft-top vehicles must have a roll bar or roll cage. Often a winch is mandatory on a Hard Yakka trip; this will be specified on the Trip Information Sheet.

It should also be noted that if a trip does not have a Trip Information Sheet in the Chronicle or it doesn't appear on the CCVC website, then it may not be an official club trip and the club insurance policy may not apply.



More Trip Details

Skills & Experience Pre-Requisites:

Family Shiny

All Participants

No pre-requisites

Shiny 4x4

Non Members

Cannot participate

Members

CCVC Driver Training and participated in at least 2 Family Shiny trips after becoming a member.

Members of other 4WD Club

Visitors are welcome if they can demonstrate to the Trip Leader they are members of another 4WD club and have adequate experience.

Club 4x4

Non Members

Cannot participate

Members

CCVC Driver Training and participated in at least 2 Shiny 4x4 trips after becoming a member.

Members of other 4WD Club

Visitors are welcome if they can demonstrate to the Trip Leader they are members of another 4WD club and have adequate experience.

Hard Yakka

Non Members

Cannot participate

Members

CCVC Driver Training and participated in at least 3 Club 4x4 trips after becoming a member.

Members of other 4WD Club

Visitors are welcome if they can demonstrate to the Trip Leader they are members of another 4WD club and have adequate experience.

Cancellation Service.

We have a cancellation service for trips. What! Cancel a trip! It hardly ever happens, in reality sometimes the conditions are just too unpleasant or factors beyond our control that take out the property or the organisers.

So we have registered with Newstalk ZB (1035 AM, and used to be known as 2ZB) who will broadcast any cancellations on the hour every hour from 6:00am. We will endeavour to show on the Trip Information Sheet which times to listen.

Trip Departure Times.

To avoid people arriving at the last minute for a trip, missing the drivers briefing, delaying the trip and generally causing confusion, we'd like to clarify the meaning of the times shown on the Trip Information Sheets.

Meeting Date & Time:

The time you are requested to be at the trip meeting point, to give you a chance to get into position, let your tyres down, and to give the Trip Leader time to collect your details before the Drivers Briefing.

Drivers Briefing Date & Time:

The time that the Trip Leader will explain the trip to drivers, including any special instructions, safety briefing and points of interest.

Departure Date & Time:

The time that the trip will actually drive away.

Date	Name	Organiser	Category	Place	Status	Notes
December 2005						
Monday 12th	ARAC/GWRC Liaison	Grant Purdie	Meeting - 17:30 - 18:30	GWRC		
Wednesday 14th	Club Night	Roger Seymour	Meeting - 00:00	Petone Working Men's Club, Udy St		
Saturday 17th	Akitio Hut (overnight)	Jim Johnson	Shiny 4X4	Akitio Hut	Tentative	Call Jim for details
Sunday 18th	Return to Odlin's Rd	Steve O'Callaghan	Club 4X4	Odlin's Road	Confirmed	
Sunday 18th	The Dams at last	Ron Wadham	Family Shiny	Manawatu	Confirmed	
Tuesday 27th	Foxton Bowl	Marcel Van Dorrestein	Family Shiny	Foxton Beach - Bowl	Confirmed	
Tuesday 27th	McKenzie Trail	Grant Purdie	Club 4X4	Foxton Beach - McKenzie Trail	Confirmed	
Wednesday 28th	Wgtn Coast Fishing & BBQ	Ray Harkness	Family Shiny	Wellington South Coast/Red Rocks	Confirmed Confirmed	
Thursday 29th	Firewood Loop	Ian Dixon	Club 4X4	Akatarawa Forest - Firewood Loop	Confirmed	
Friday 30th	Rallywoods	Steve O'Callaghan	Club 4X4	Rally woods - Green Hut	Confirmed	
Saturday 31st	Dick's Yard Work Party	Grant Purdie	Club 4X4	Akatarawa Forest - Dick's Yard	Confirmed	Work Party to clear the main tracks.
Saturday 31st	Jamboree - Puketiro Forest	Taranua 4.W.D. Club Inc.	Hard Yakka	Akatarawa Forest - Perhaps Rd Side Tracks plus a Surprise	Planned	
Saturday 31st	Jamboree - Puketiro to Orange Hut	Taranua 4.W.D. Club Inc.	Family Shiny / Shiny 4X4	Akatarawa Forest - Puketiro Forest	Planned	
January 2006						
Sunday 1st	Jamboree - Gymkana ?	Taranua 4.W.D. Club Inc.	Family Shiny		Planned	
Monday 2nd	Jamboree - CCVC to Terawhiti	Taranua 4.W.D. Club Inc.	Family Shiny / Hard Yakka		Confirmed	
Tuesday 3rd	Devil's Staircase	Grant Purdie	Hard Yakka	Akatarawa Forest - Devil's Staircase Akatarawa Forest - Rock Garden	Confirmed	
Tuesday 3rd	GPS trek	Ray Harkness	Family Shiny		Confirmed	non 4x4 event
Tuesday 3rd	Jamboree - up Odlin's Rd	Taranua 4.W.D. Club Inc.	Shiny 4X4 / Club 4X4	Odlin's Road	Tentative	
Wednesday 4th	Jamboree - CCVC Orongorongo Coast	Ron Wadham	Family Shiny	Orongorongo Coast	Confirmed	
Wednesday 4th	Jamboree - Puketiro / Akas	Taranua 4.W.D. Club Inc.	Hard Yakka	Akatarawa Forest - Puketiro Forest	Planned	
Saturday 7th	Boiler Gully for the Shinies	Grant Purdie	Family Shiny / Shiny 4X4	Akatarawa Forest - Boiler Gully Akatarawa Forest - Deadwood Ridge	Confirmed	Deadwood Ridge as Plan B
Sunday 8th	Odlin's Road CCVC trip	Steve O'Callaghan	Club 4X4	Odlin's Road	Confirmed	
Sunday 8th	Trial - Thames Club @ Ngatea	-tba-				
Saturday 14th	Akatarawa Tag-Along Tour	Grant Purdie	Shiny 4X4 / Club 4X4	Akatarawa Forest	Confirmed	
Saturday 14th	Barry's mystery South Coast Loop	Barry Insull	Family Shiny	Wellington South Coast	Confirmed	
Tuesday 17th	Sunset Tour No 1	Ron Wadham	Shiny 4X4	Battle Hill & Puketiro Forest	Confirmed	
Thursday 19th	Foxton Beach Coast Care Committee	Grant Purdie	Meeting - 19:00 - 21:00	Foxton Beach PALS Building		
Saturday 21st	McKenzie Trail for Shinies	Grant Purdie	Shiny 4X4	Foxton Beach - McKenzie Trail	Confirmed	
Monday 23rd	Wellington Anniversary	-tba-				

Date	Name	Organiser	Category	Place	Status	Notes
January 2006						
Monday 23rd	Wellington Anniversary	-tba-				
Wednesday 25th	Committee	John Parfitt	Meeting - 19:30	-tba-		
Saturday 28th	Downhill the hard way!	Andrew Farmer	Event	See Trip info sheet	Confirmed	Come along and watch the hard yakka trucks get stuck/break/roll over etc
			Hard Yakka	Gill's Farm	Confirmed	Very technical drive down rocky creek
Sunday 29th	Back to the Aka's	Eric Bon	Family Shiny	Akatarawa Forest	Confirmed	
Sunday 29th	National Trial - Taupo	-tba-				
Sunday 29th	Sutherlands track Trip Leaders	Ray Harkness	Shiny 4X4	Sutherland's Track	Confirmed	Trip leader training - contact Ray Harkness
February 2006						
Saturday 4th	Ohinewairua Station	John Vruink	Shiny 4X4	Ohinewairua Station, Taihape	Confirmed	3 day event
Saturday 4th	Taranaki Extreme 4WD challenge	-tba-	Event		Confirmed	Contact Gordon Burnside at gb@excavatordealer.com
Sunday 5th	Ruahine Ranges	Ron Wadham	Family Shiny	Ruahine Ranges	Confirmed	
Monday 6th	Waitangi Day	-tba-				
Wednesday 8th	Club Night	Roger Seymour	Meeting - 19:30	PWMC		
Saturday 11th	Sunset Tour No 2	Ron Wadham	Shiny 4X4	Battle Hill & Puketiro Forest	Confirmed	
Sunday 12th	Advanced driver training/shiny competition	Andrew Farmer	Training (Driver Practical)	See Trip info sheet		
			Family Shiny / Shiny 4X4	Patterson's Farm	Confirmed	
Monday 13th	ARAC/GWRC Liaison	Grant Purdie	Meeting - 17:30 - 19:00	GWRC		
Sunday 19th	club champs round 3	Andrew Farmer	Shiny 4X4	Terawhiti Station	Tentative	Venue not yet confirmed
Monday 20th	Safety subcommittee	Andrew Farmer	Meeting - 19:30	Carl Furniss', Hawkins St		
Wednesday 22nd	Committee meeting	John Parfitt	Meeting - 19:30	-tba-		
Sunday 26th	Ruahine Ranges - North Range Rd	Ron Wadham	Shiny 4X4	Ruahine Ranges	Confirmed	
Monday 27th	ARAC Committee	Grant Purdie	Meeting - 19:00	Murray's House		
March 2006						
Sunday 5th	National Trials Series Rd4 - Wanganui	-tba-				
Monday 6th	Trip Leaders Forum	Carl Furniss	Meeting - 19:30	Petone Working Men's Club, Udy St		
Wednesday 8th	Club Night	-tba-	Meeting - 19:30	Petone Working Men's Club, Udy St		
Sunday 19th	Pauahatanui Country Fair - never waste a crowd !	Paul Adams	Shiny 4X4 / Hard Yakka	Battle Hill		rides for punters and a tuff demo
Thursday 23rd	Foxton Beach Coast Care Committee	Grant Purdie	Meeting - 19:00 - 21:00	Foxton Beach PALS Building		
Wednesday 29th	Committee	-tba-	Meeting - 19:30	-tba-		



VEHICLE CLUB
Wellington (inc)



VEHICLE CLUB
Wellington (inc)



Dec - Feb Trips

The Official Magazine of
The Cross Country Vehicle Club (Wellington) Inc
PO Box 38-762, Te Puni, Wellington

www.ccvc.org.nz

Cross Country Vehicle Club (Wellington) Inc

PO Box 38-762, Te Puni, Wellington

www.ccvc.org.nz



Club Officers

<i>Position</i>	<i>Name</i>	<i>Home</i>	<i>Work</i>	<i>Fax</i>	<i>Cellphone</i>
President	Roger Seymour	586 2518		586 2013	021 424 351
Vice President	Paul Adams	234 6997	568 9532	568 9536	027 594 1343
Past President	Grant Purdie	233 1192	021 612 216	233 1192	021 612 216
Secretary	John Parfitt	477 0267	802 8252		021 034 0400
Treasurer	Jeff Simpson	233 8873	918 0748		027 440 5415
Club Captain	Carl Furniss	976 5313	976 5325	976 5313	027 201 2529

General Committee Members

<i>Position</i>	<i>Name</i>	<i>Home</i>	<i>Work</i>	<i>Fax</i>	<i>Cellphone</i>
Competition Officer	Giles Sullivan	384 8048	382 5263		027 431 1529
Driver Training	Ray Harkness	970 5348			
Entertainment	John Vruink	567 1142	027 443 9981		027 443 9981
NZFWDA Delegate	Ralph Dobson	526 5119	568 5562		027 494 6699
Land Access	Grant Purdie	233 1192	021 612 216	233 1192	021 612 216
New Members	Steve O'Callaghan	235 9849			021 131 0647
Newsletter	Alan Donaldson	564 3045	914 8352	914 8366	021 448 127
Publicity	John Vruink	567 1142	027 443 9981		027 443 9981
Safety Officer	Andrew Farmer	567 6677	025 446 803		025 446 803
Trip Co-ordinator	Marcel van Dorrestein	234 8054	471 4725	471 0395	027 243 4243

Other Useful People

Archivist	Tony Brown	04 905 9546			
Assets	Eric Bon	565 1597			
Help Desk	Ray Harkness	970 5348			
Membership Database	Marcus Steeneken			568 8465	021 439 183
Track Maintenance	Ray Harkness	970 5348			
Trophies	Alan Donaldson	564 3045	914 8352	914 8366	021 448 127
Webmaster	Mark Wilson	973 4782	920 3374		029 920 3374
Welfare	Gillian George	232 4200			

CCVC Life Members

Andy Cockroft	Bob Jeffrey (Deceased)	Bruce Mulhare	George Bean
Graham Barr	Heather Jeffrey	Leith Bean	Mike Gall
Owen Farghar	Raynor Mulhare	Ron Oliver (Deceased)	Ron Wadham
Steve Lacey	Stuart Brown	Tom Adams	Tony Street
Vern Lill			

**The club meets at 7:30pm on the 2nd Wednesday of each month
at the Petone Working Mans Club, Udy Street, Petone.**

MAGAZINE CONTRIBUTIONS

This is your magazine so it can only be as good as the contributions you make!! We need any articles, trip reports, technical items, "How-To's", etc to be in the hands of the editor by the end of each calendar month. Please post to 34a Hine Rd Wainuiomata, fax to 04 914 8366 or email to newsletter@ccvc.org.nz

SAFETY POLICY

Should any members fail to return from any outing, four wheel drive or otherwise, whether as a club member or as a private individual, the following person/s should be contacted in the first instance:

Jim Johnson - 938 9404 (Hm) or 021 389 404

Gavin Holden - 025 249 1959

Rodney Bracefield - 234 8887 (Hm), 914 8383 (Wk) or 021 488 808

DISCLAIMER: The opinions expressed in this magazine are those of the contributors and not necessarily those of the club, it's executive or committee members. Publication of maintenance techniques or mechanical modifications should be weighed against generally accepted procedures and the Club should not be considered an authority in this area. The mention of products, service procedures or service organisations herein does not constitute endorsement by the Club, the Cross Country Chronicle or it's Editor.

Cross Country Vehicle Club (Wellington) Inc.

Trip Information Sheet



VEHICLE CLUB
Wellington (inc)

Akitio Hut (overnight) - Sat 17/12/2005

Organiser: Jim Johnson

Description: Akitio Hut (overnight)

Category: Shiny 4X4

Trip location(s):

Akitio Hut

Trip leader: Jim Johnson

Home phone 049389404 Cellphone 021389404

Trip fee \$15.00

Bookings are required.

Meeting point(s):

see notes section

Finishing point(s):

Where we started...

Dates:

Start Sat 17/12/2005 09:30

Finish Sun 18/12/2005 15:00

Fuel required for: 150 kms.

Weather Restrictions:

Possible vehicle damage expected on trip:

Trip suitable for:

Novice drivers

Dry

Wet

☒☐

Average drivers

☐☒

Experienced Drivers

☐☐

Pets:

No

Food:

BYO Food

BYO Drinks

Vehicle Requirements:

Tow hooks front and rear

Recovery strop, shovel

First aid kit, fire extinguisher

Roll bar/cage for all soft/open tops

Club radio preferred

Good mud tyres essential

Track type:

Gravel

Beach or sand

Dirt roads and tracks

Clay or mud

Creeks, small rivers

Average ascents/descents

Mostly Some Optional

☐☒☐☐☒☐☐☒☐☐☒☐☐☒☐☐☒☐

The Trip Leader is required by the Club Committee to turn away vehicles or drivers that do not comply with Trip Categories, or any special conditions indicated on this form.

Access to land is a privilege, not a right. Please comply with instructions from Trip Leaders and at all times respect the properties we drive on. Remember: "Abuse it and we'll lose it"

Notes: Friday night at Riversdale Motor Camp, Saturday meet at Akitio Community Hall, Sunday finish at Riversdale - Call Jim for additional details

Cross Country Vehicle Club (Wellington) Inc.

Trip Information Sheet



VEHICLE CLUB
Wellington (inc)

Return to Odlin's Rd - Sun 18/12/2005

Organiser: Steve O'Callaghan

Description: Return to Odlin's Rd

Category: Club 4X4

Trip location(s):

Odlin's Road

Trip leader: Steve O'Callaghan

Home phone (04) 235 - 9849 Cellphone 0211310647

Trip fee \$0.00

Bookings are not required.

Meeting point(s):

Finishing point(s):

Dates:

Start Sun 18/12/2005 00:00

Finish Sun 18/12/2005 00:00

Fuel required for: 0 kms.

Weather Restrictions:

Subject to landowners discretion

Possible vehicle damage expected on trip:

Trip suitable for:

Dry Wet

Novice drivers

☐☐

Average drivers

☒☐

Experienced Drivers

☒☒

Pets: No

Food:

Vehicle Requirements:

Tow hooks front and rear

Recovery strop, shovel

First aid kit, fire extinguisher

Roll bar/cage for all soft/open tops

Extra recovery gear an advantage

Track type: Mostly Some Optional

The Trip Leader is required by the Club Committee to turn away vehicles or drivers that do not comply with Trip Categories, or any special conditions indicated on this form.

Access to land is a privilege, not a right. Please comply with instructions from Trip Leaders and at all times respect the properties we drive on. Remember: "Abuse it and we'll lose it"

Cross Country Vehicle Club (Wellington) Inc.

Trip Information Sheet



VEHICLE CLUB
Wellington (inc)

The Dams at last - Sun 18/12/2005

Organiser: Ron Wadham

Description:

Category: Family Shiny

Trip location(s):

Manawatu

Trip leader: Ron Wadham

Home phone (04) 563 - 7907 Cellphone 0252106455

Trip fee \$10.00

Bookings are not required.

Meeting point(s):

Manawatu River - Turn left on Highway 1 between bridges (before Foxton)

Finishing point(s):

Manawatu Gorge

Dates:

Start Sun 18/12/2005 09:30

Drivers briefing Sun 18/12/2005 09:50

Finish Sun 18/12/2005 17:00

Fuel required for: 350 kms.

Weather Restrictions:

Light rain/wind OK

Subject to landowners discretion

Listen to radio cancellation service

on NewstalkZB 1035AM from 07:00

Possible vehicle damage expected on trip:

No damage likely

Some bush marks possible

Trip suitable for:

	Dry	Wet
Novice drivers	<input checked="" type="checkbox"/>	<input type="checkbox"/>
Average drivers	<input type="checkbox"/>	<input checked="" type="checkbox"/>
Experienced Drivers	<input type="checkbox"/>	<input type="checkbox"/>

Pets: No

Food: BYO Food

BYO Drinks

Vehicle Requirements:

Tow hooks front and rear

Recovery strop, shovel

First aid kit, fire extinguisher

Roll bar/cage for all soft/open tops

Mud tyres preferable

Track type:

Gravel

Dirt roads and tracks

Clay or mud

Average ascents/descents

Deep mud holes

Mostly Some Optional

☐ ☒ ☐

☐ ☒ ☐

☐ ☒ ☐

☐ ☒ ☐

☐ ☐ ☒

The Trip Leader is required by the Club Committee to turn away vehicles or drivers that do not comply with Trip Categories, or any special conditions indicated on this form.

Access to land is a privilege, not a right. Please comply with instructions from Trip Leaders and at all times respect the properties we drive on. Remember: "Abuse it and we'll lose it"

Notes: Includes travel alongside the Manawatu river to Shannon then Mangahao Dams then on to North Range Road

Cross Country Vehicle Club (Wellington) Inc.

Trip Information Sheet



VEHICLE CLUB
Wellington (inc)

Foxton Bowl - Tue 27/12/2005
Organiser: Marcel Van Dorrestein

Description:

Category: Family Shiny

Trip location(s):

Foxton Beach - Bowl

Trip leader:

Marcel Van Dorrestein
Home phone 042348054 Cellphone 0272434243

Trip fee \$0.00

Bookings are required.

Meeting point(s):

Bird Sanctuary Bollards, 50m past Foxton Beach Motor Camp gate.

Finishing point(s):

Where we started...

Dates:

Meeting time Tue 27/12/2005 10:00

Drivers briefing Tue 27/12/2005 10:10

Finish Tue 27/12/2005 14:00

Fuel required for: 50 kms.

Weather Restrictions:

Light rain/wind OK
Subject to landowners discretion

Possible vehicle damage expected on trip:

No damage likely
Some bush marks possible

Trip suitable for:

	Dry	Wet
Novice drivers	<input checked="" type="checkbox"/>	<input checked="" type="checkbox"/>
Average drivers	<input type="checkbox"/>	<input type="checkbox"/>
Experienced Drivers	<input type="checkbox"/>	<input type="checkbox"/>

Pets:

Yes

Food:

BYO Food

BYO Drinks

Vehicle Requirements:

Tow hooks front and rear
Recovery strop, shovel
First aid kit, fire extinguisher
Roll bar/cage for all soft/open tops
Club radio preferred
PRS radio preferred

Track type:

	Mostly	Some	Optional
Beach or sand	<input checked="" type="checkbox"/>	<input type="checkbox"/>	<input type="checkbox"/>
Average ascents/descents	<input checked="" type="checkbox"/>	<input type="checkbox"/>	<input type="checkbox"/>
Steep ascents/descents	<input type="checkbox"/>	<input checked="" type="checkbox"/>	<input type="checkbox"/>

The Trip Leader is required by the Club Committee to turn away vehicles or drivers that do not comply with Trip Categories, or any special conditions indicated on this form.

Access to land is a privilege, not a right. Please comply with instructions from Trip Leaders and at all times respect the properties we drive on. Remember: "Abuse it and we'll lose it"

Notes: just a play in the bowl

Cross Country Vehicle Club (Wellington) Inc.

Trip Information Sheet



VEHICLE CLUB
Wellington (inc)

Mckenzie Trail - Tue 27/12/2005

Organiser: Grant Purdie

Description: Afternoon trip.

Category: Club 4X4

Trip location(s):

Foxton Beach - McKenzie Trail

Trip leader: Grant Purdie

Home phone (04) 233 - 1192 Cellphone 021612216

Trip fee \$0.00

Bookings are required.

Meeting point(s):

Bird Sanctuary Bollards, 50m past Foxton Beach Motor Camp gate.

Finishing point(s):

Where we started...

Dates:

Meeting time Tue 27/12/2005 14:30

Drivers briefing Tue 27/12/2005 14:40

Finish Tue 27/12/2005 20:00

Fuel required for: 80 kms.

Weather Restrictions:

Light rain/wind OK

Subject to landowners discretion

Possible vehicle damage expected on trip:

No damage likely

Some bush marks possible

Trip suitable for:

Novice drivers

Dry Wet

☐☐

Average drivers

☒☒

Experienced Drivers

☐☐

Pets: No

Food: BYO Food

BYO Drinks

Vehicle Requirements:

Tow hooks front and rear

Recovery strop, shovel

First aid kit, fire extinguisher

Roll bar/cage for all soft/open tops

Club radio preferred

PRS radio preferred

Track type:

Beach or sand

Average ascents/descents

Steep ascents/descents

Mostly Some Optional

☒☐☐☒☐☐☐☒☐

The Trip Leader is required by the Club Committee to turn away vehicles or drivers that do not comply with Trip Categories, or any special conditions indicated on this form.

Access to land is a privilege, not a right. Please comply with instructions from Trip Leaders and at all times respect the properties we drive on. Remember: "Abuse it and we'll lose it"

Cross Country Vehicle Club (Wellington) Inc.

Trip Information Sheet



VEHICLE CLUB
Wellington (inc)

Wgtn Coast Fishing & BBQ - Wed 28/12/2005

Organiser: Ray Harkness

Description:

Category: Family Shiny

Trip location(s):

Wellington South Coast/Red Rocks

Trip leader: Ray Harkness

Home phone 049705348 Cellphone

Trip fee \$10.00

Bookings are required.

Meeting point(s):

Owhiro Bay Quarry Car Park

Finishing point(s):

Where we started...

Dates:

Start Wed 28/12/2005 10:00

Drivers briefing Wed 28/12/2005 10:15

Finish Wed 28/12/2005 15:00

Fuel required for: 100 kms.

Weather Restrictions:

Light rain/wind OK

Subject to landowners discretion

Possible vehicle damage expected on trip:

No damage likely

Some bush marks possible

Trip suitable for:

Novice drivers

Dry Wet

☒☒

Average drivers

☒☒

Experienced Drivers

☐☐

Pets: No

Food: BYO Drinks

BBQ Provided

BBQ Food Provided

Vehicle Requirements:

Tow hooks front and rear

Recovery strop, shovel

First aid kit, fire extinguisher

Roll bar/cage for all soft/open tops

Club radio preferred

PRS radio preferred

Any tyres suitable

Track type:

Beach or sand

Dirt roads and tracks

Clay or mud

Creeks, small rivers

Average ascents/descents

Deep mud holes

Mostly Some Optional

☒☐☐☐☒☐☐☒☐☐☒☐☐☒☐☐☐☒

The Trip Leader is required by the Club Committee to turn away vehicles or drivers that do not comply with Trip Categories, or any special conditions indicated on this form.

Access to land is a privilege, not a right. Please comply with instructions from Trip Leaders and at all times respect the properties we drive on. Remember: "Abuse it and we'll lose it"

Notes: Family day out, no serious driving - bring your rod and reel (catch lunch ?)

Cross Country Vehicle Club (Wellington) Inc.

Trip Information Sheet



VEHICLE CLUB
Wellington (inc)

Firewood Loop - Thu 29/12/2005
Organiser: Ian Dixon

Description: A chance for those of you who have never tried this track before.

Category: Club 4X4

Trip location(s):

Akatarawa Forest - Firewood Loop

Trip leader: Ian Dixon

Home phone (04) 563 - 7610 Cellphone 0274576767

Assistant trip leader - Grant Purdie

Contact person - Ian Dixon

Bookings are required.

Trip fee \$15.00

Meeting point(s):

Maungakotukutuku Gate

Finishing point(s):

Maungakotukutuku Gate

Dates:

Meeting time Thu 29/12/2005 09:15

Drivers briefing Thu 29/12/2005 09:30

Book by... Wed 28/12/2005 18:00

Finish Thu 29/12/2005 18:00

Fuel required for: 40 kms.

Weather Restrictions:

Rain, hail or snow "We go"

Possible vehicle damage expected on trip:

Some bush marks possible

Some damage to sills & corners possible

Trip suitable for:

	Dry	Wet
Novice drivers	<input type="checkbox"/>	<input type="checkbox"/>
Average drivers	<input checked="" type="checkbox"/>	<input type="checkbox"/>
Experienced Drivers	<input checked="" type="checkbox"/>	<input checked="" type="checkbox"/>

Pets: No

Food: BYO Food
BYO Drinks

Vehicle Requirements:

Tow hooks front and rear
Recovery strop, shovel
First aid kit, fire extinguisher
Roll bar/cage for all soft/open tops
Club radio or PRS required
Good mud tyres essential
Winch required
Extra recovery gear an advantage

Track type:

	Mostly	Some	Optional
Dirt roads and tracks	<input checked="" type="checkbox"/>	<input type="checkbox"/>	<input type="checkbox"/>
Clay or mud	<input checked="" type="checkbox"/>	<input type="checkbox"/>	<input type="checkbox"/>
Average ascents/descents	<input checked="" type="checkbox"/>	<input type="checkbox"/>	<input type="checkbox"/>
Gravel	<input type="checkbox"/>	<input checked="" type="checkbox"/>	<input type="checkbox"/>
Deep mud holes	<input type="checkbox"/>	<input checked="" type="checkbox"/>	<input type="checkbox"/>

The Trip Leader is required by the Club Committee to turn away vehicles or drivers that do not comply with Trip Categories, or any special conditions indicated on this form.

Access to land is a privilege, not a right. Please comply with instructions from Trip Leaders and at all times respect the properties we drive on. Remember: "Abuse it and we'll lose it"

Cross Country Vehicle Club (Wellington) Inc.

Trip Information Sheet



VEHICLE CLUB
Wellington (inc)

Rallywoods - Fri 30/12/2005
Organiser: Steve O'Callaghan

Description:

Category: Club 4X4

Trip location(s):

Rally woods - Green Hut

Trip leader: Steve O'Callaghan

Home phone (04) 235 - 9849 Cellphone 0211310647

Trip fee \$15.00

Bookings are required.

Meeting point(s):

Moonshine/Haywards corner

Finishing point(s):

Where we started...

Dates:

Meeting time Fri 30/12/2005 09:30

Drivers briefing Fri 30/12/2005 09:45

Finish Fri 30/12/2005 15:00

Fuel required for: 100 kms.

Weather Restrictions:

Light rain/wind OK

Subject to landowners discretion

Possible vehicle damage expected on trip:

Some bush marks possible

Some damage to sills & corners possible

Trip suitable for:

Dry Wet

Novice drivers

☐☐

Average drivers

☒☒

Experienced Drivers

☒☒

Pets: No

Food: BYO Food

BYO Drinks

Vehicle Requirements:

Tow hooks front and rear

Recovery strop, shovel

First aid kit, fire extinguisher

Roll bar/cage for all soft/open tops

Club radio preferred

Good mud tyres essential

Winch preferred

Extra recovery gear an advantage

Track type:

Clay or mud

Creeks, small rivers

Average ascents/descents

Deep mud holes

Steep ascents/descents

Rocky or river boulders

Mostly Some Optional

☒☐☒☒☐☒☒☐☐☐☒☒☐☒☒☐☐☒

The Trip Leader is required by the Club Committee to turn away vehicles or drivers that do not comply with Trip Categories, or any special conditions indicated on this form.

Access to land is a privilege, not a right. Please comply with instructions from Trip Leaders and at all times respect the properties we drive on. Remember: "Abuse it and we'll lose it"

Cross Country Vehicle Club (Wellington) Inc.

Trip Information Sheet



VEHICLE CLUB
Wellington (inc)

Dick's Yard Work Party - Sat 31/12/2005

Organiser: Grant Purdie

Description: To clear the main tracks in and out of
Dick's Yard

Category: Club 4X4

Trip location(s):

Akatarawa Forest - Dick's Yard

Trip leader: Grant Purdie

Home phone (04) 233 - 1192 Cellphone 021612216

Trip fee \$15.00

Bookings are required.

Meeting point(s):

Moonshine/Haywards corner

Finishing point(s):

Where we started...

Dates:

Meeting time Sat 31/12/2005 09:15

Drivers briefing Sat 31/12/2005 09:30

Book by... Fri 30/12/2005 19:00

Finish Sat 31/12/2005 16:00

Fuel required for: 40 kms.

Weather Restrictions:

Rain, hail or snow "We go"

Possible vehicle damage expected on trip:

Some bush marks possible

Trip suitable for:

Novice drivers

Dry Wet

☐ ☐

Average drivers

☒ ☐

Experienced Drivers

☒ ☒

Pets: No

Food: BYO Food

BYO Drinks

Vehicle Requirements:

Tow hooks front and rear

Recovery strop, shovel

First aid kit, fire extinguisher

Roll bar/cage for all soft/open tops

Club radio preferred

PRS radio preferred

Good mud tyres essential

Extra recovery gear an advantage

Track type:

Dirt roads and tracks

Clay or mud

Steep ascents/descents

Gravel

Rocky or river boulders

Creeks, small rivers

Average ascents/descents

Mostly Some Optional

☒ ☐ ☐

☒ ☐ ☐

☒ ☐ ☐

☐ ☒ ☐

☐ ☒ ☐

☐ ☒ ☐

☐ ☒ ☐

The Trip Leader is required by the Club Committee to turn away vehicles or drivers that do not comply with
Trip Categories, or any special conditions indicated on this form.

Access to land is a privilege, not a right. Please comply with instructions from Trip Leaders and at all times
respect the properties we drive on. Remember: "Abuse it and we'll lose it"

Cross Country Vehicle Club (Wellington) Inc.

Trip Information Sheet



VEHICLE CLUB
Wellington (inc)

Jamboree - Puketiro Forest - Sat 31/12/2005

Organiser: Tararua 4.W.D. Club Inc.

Description:

Category: Hard Yakka

Trip location(s):

Akatarawa Forest - Perhams Rd Side Tracks plus a Surprise

Trip leader: Tararua 4.W.D. Club Inc.

Phone

Trip fee \$0.00

Bookings are not required.

Meeting point(s):

Battle Hill - the Dell car park

Finishing point(s):

Where we started...

Dates:

Meeting time Sat 31/12/2005 09:30

Drivers briefing Sat 31/12/2005 09:30

Finish Sat 31/12/2005 16:30

Fuel required for: 120 kms.

Weather Restrictions:

Possible vehicle damage expected on trip:

Trip suitable for:

Dry Wet

Novice drivers

☐☐

Average drivers

☒☒

Experienced Drivers

☒☒

Pets: No

Food: BYO Food

BYO Drinks

Vehicle Requirements:

Tow hooks front and rear

Recovery strop, shovel

First aid kit, fire extinguisher

Roll bar/cage for all soft/open tops

PRS radio preferred

Good mud tyres essential

Extra recovery gear an advantage

Track type:

Clay or mud

Mostly Some Optional

☒☐☐

Average ascents/descents

☒☐☐

Dirt roads and tracks

☐☒☐

Creeks, small rivers

☐☒☐

Steep ascents/descents

☐☒☐

The Trip Leader is required by the Club Committee to turn away vehicles or drivers that do not comply with Trip Categories, or any special conditions indicated on this form.

Access to land is a privilege, not a right. Please comply with instructions from Trip Leaders and at all times respect the properties we drive on. Remember: "Abuse it and we'll lose it"

Notes: Tararua is running this trip so details are only tentative - trip fee TBA Contact is Stuart Barton at stuart.barton@clear.net.nz, phone 04 2399647 (hm)

Cross Country Vehicle Club (Wellington) Inc.

Trip Information Sheet



VEHICLE CLUB
Wellington (inc)

Jamboree - Puketiro to Orange Hut
Sat 31/12/2005
Organiser: Tararua 4.W.D. Club Inc.

Description:

Category: Family Shiny to Shiny 4X4

Trip location(s):

Akatarawa Forest - Puketiro Forest

Trip leader: Tararua 4.W.D. Club Inc.
Phone

Trip fee \$0.00

Bookings are not required.

Meeting point(s):

Battle Hill - the Dell car park

Finishing point(s):

Where we started...

Dates:

Meeting time Sat 31/12/2005 09:30

Drivers briefing Sat 31/12/2005 09:30

Finish Sat 31/12/2005 16:30

Fuel required for: 150 kms.

Weather Restrictions:

Possible vehicle damage expected on trip:

Trip suitable for:

	Dry	Wet
Novice drivers	<input checked="" type="checkbox"/>	<input checked="" type="checkbox"/>
Average drivers	<input type="checkbox"/>	<input type="checkbox"/>
Experienced Drivers	<input type="checkbox"/>	<input type="checkbox"/>

Pets: No
Food: BYO Food
BYO Drinks

Vehicle Requirements:

Tow hooks front and rear
Recovery strop, shovel
First aid kit, fire extinguisher
Roll bar/cage for all soft/open tops
PRS radio preferred
Any tyres suitable
Mud tyres preferable

Track type:

	Mostly	Some	Optional
Dirt roads and tracks	<input checked="" type="checkbox"/>	<input type="checkbox"/>	<input type="checkbox"/>
Clay or mud	<input type="checkbox"/>	<input checked="" type="checkbox"/>	<input type="checkbox"/>
Creeks, small rivers	<input type="checkbox"/>	<input checked="" type="checkbox"/>	<input type="checkbox"/>
Average ascents/descents	<input type="checkbox"/>	<input checked="" type="checkbox"/>	<input type="checkbox"/>

The Trip Leader is required by the Club Committee to turn away vehicles or drivers that do not comply with Trip Categories, or any special conditions indicated on this form.

Access to land is a privilege, not a right. Please comply with instructions from Trip Leaders and at all times respect the properties we drive on. Remember: "Abuse it and we'll lose it"

Notes: Details are tentative, Tararua Club is running the trip - trip fee TBA Contact is Stuart Barton at stuart.barton@clear.net.nz, phone 04 2399647 (hm)

Cross Country Vehicle Club (Wellington) Inc.

Trip Information Sheet



VEHICLE CLUB
Wellington (inc)

Jamboree - Gymkana ? - Sun 01/01/2006

Organiser: Tararua 4.W.D. Club Inc.

Description:

Category: Family Shiny

Trip location(s):

Trip leader: Tararua 4.W.D. Club Inc.
Phone

Bookings are not required.

Trip fee \$0.00

Meeting point(s):

Finishing point(s):

-tba-

Dates:

Meeting time Sun 01/01/2006 10:30

Drivers briefing Sun 01/01/2006 10:30

Finish Sun 01/01/2006 16:30

Fuel required for: 0 kms.

Possible vehicle damage expected on trip:

Trip suitable for:

Dry Wet

Novice drivers

☐☐

Average drivers

☐☐

Experienced Drivers

☐☐

Pets: No

Food: BYO Food

BYO Drinks

Vehicle Requirements:

Tow hooks front and rear

Recovery strop, shovel

First aid kit, fire extinguisher

Roll bar/cage for all soft/open tops

Track type: Mostly Some Optional

The Trip Leader is required by the Club Committee to turn away vehicles or drivers that do not comply with Trip Categories, or any special conditions indicated on this form.

Access to land is a privilege, not a right. Please comply with instructions from Trip Leaders and at all times respect the properties we drive on. Remember: "Abuse it and we'll lose it"

Notes: No details at present Contact is Stuart Barton at stuart.barton@clear.net.nz, phone 04 2399647 (hm)

Cross Country Vehicle Club (Wellington) Inc.

Trip Information Sheet



VEHICLE CLUB
Wellington (inc)

Jamboree - CCVC to Terawhiti - Mon 02/01/2006

Organiser: Tararua 4.W.D. Club Inc.

Description:

Category: Family Shiny to Hard Yakka

Trip location(s):

Trip leader: Jim Johnson

Home phone 049389404 Cellphone 021389404

Bookings are required.

Trip fee \$15.00

Meeting point(s):

Old Makara Garage - Makara Village

Finishing point(s):

Terawhiti Station gate

Dates:

Meeting time Mon 02/01/2006 09:30

Drivers briefing Mon 02/01/2006 09:30

Finish Mon 02/01/2006 16:30

Fuel required for: 120 kms.

Weather Restrictions:

Light rain/wind OK

Subject to landowners discretion

Possible vehicle damage expected on trip:

No damage likely

Trip suitable for:

	Dry	Wet
Novice drivers	<input checked="" type="checkbox"/>	<input checked="" type="checkbox"/>
Average drivers	<input checked="" type="checkbox"/>	<input checked="" type="checkbox"/>
Experienced Drivers	<input checked="" type="checkbox"/>	<input checked="" type="checkbox"/>

Pets: No

Food: BYO Food

BYO Drinks

Vehicle Requirements:

Tow hooks front and rear
Recovery strop, shovel
First aid kit, fire extinguisher
Roll bar/cage for all soft/open tops
Club radio preferred
PRS radio preferred
Any tyres suitable
Mud tyres preferable
Extra recovery gear an advantage

Track type:

Dirt roads and tracks	<input checked="" type="checkbox"/>	<input type="checkbox"/>	<input type="checkbox"/>
Average ascents/descents	<input checked="" type="checkbox"/>	<input type="checkbox"/>	<input type="checkbox"/>
Clay or mud	<input type="checkbox"/>	<input checked="" type="checkbox"/>	<input type="checkbox"/>
Creeks, small rivers	<input type="checkbox"/>	<input checked="" type="checkbox"/>	<input type="checkbox"/>
Deep mud holes	<input type="checkbox"/>	<input type="checkbox"/>	<input checked="" type="checkbox"/>
Steep ascents/descents	<input type="checkbox"/>	<input type="checkbox"/>	<input checked="" type="checkbox"/>

Mostly Some Optional

The Trip Leader is required by the Club Committee to turn away vehicles or drivers that do not comply with Trip Categories, or any special conditions indicated on this form.

Access to land is a privilege, not a right. Please comply with instructions from Trip Leaders and at all times respect the properties we drive on. Remember: "Abuse it and we'll lose it"

Notes: Tararua Jamboree trip/ CCVC arrange access and trip lead it, Hard yakka part only if there is interest = book for the Hard Yakka. Plastic Bay, Ohau Bay, down the valley, up to Trig, to coast then up river to woolshed

Cross Country Vehicle Club (Wellington) Inc.

Trip Information Sheet



VEHICLE CLUB
Wellington (inc)

Devil's Staircase - Tue 03/01/2006

Organiser: Grant Purdie

Description:

Category: Hard Yakka

Trip location(s):

Akatarawa Forest - Devil's Staircase
Akatarawa Forest - Rock Garden

Trip leader:

Grant Purdie
Home phone (04) 233 - 1192 Cellphone 021612216

Trip fee \$15.00

Bookings are not required.

Meeting point(s):

Maungakotukutuku Gate

Finishing point(s):

Maungakotukutuku Gate

Dates:

Meeting time Tue 03/01/2006 08:45

Drivers briefing Tue 03/01/2006 09:00

Finish Tue 03/01/2006 19:00

Fuel required for: 100 kms.

Weather Restrictions:

Rain, hail or snow "We go"

Possible vehicle damage expected on trip:

Some bush marks possible

Some damage to sills & corners possible

Trip suitable for:

Novice drivers

Dry

Wet

☐☐

Average drivers

☐☐

Experienced Drivers

☒☒

Pets:

No

Food:

BYO Food

BYO Drinks

Vehicle Requirements:

Tow hooks front and rear

Recovery strop, shovel

First aid kit, fire extinguisher

Roll bar/cage for all soft/open tops

Club radio or PRS required

Good mud tyres essential

Winch required

Extra recovery gear an advantage

Track type:

Dirt roads and tracks

Clay or mud

Steep ascents/descents

Gravel

Rocky or river boulders

Creeks, small rivers

Average ascents/descents

Mostly Some Optional

☒ ☐ ☐

☒ ☐ ☐

☒ ☐ ☐

☐ ☒ ☐

☐ ☒ ☐

☐ ☒ ☐

☐ ☒ ☐

The Trip Leader is required by the Club Committee to turn away vehicles or drivers that do not comply with Trip Categories, or any special conditions indicated on this form.

Access to land is a privilege, not a right. Please comply with instructions from Trip Leaders and at all times respect the properties we drive on. Remember: "Abuse it and we'll lose it"

Cross Country Vehicle Club (Wellington) Inc.

Trip Information Sheet



VEHICLE CLUB
Wellington (inc)

GPS trek - Tue 03/01/2006
Organiser: Ray Harkness

Description:

Category: Family Shiny

Trip location(s):

Trip leader: Ray Harkness
Home phone 049705348 Cellphone

Bookings are required.

Trip fee \$0.00

Meeting point(s):

Jarden Mile - Ngarunga Gorge

Finishing point(s):

Dates:

Meeting time Tue 03/01/2006 10:00

Drivers briefing Tue 03/01/2006 10:10

Finish Tue 03/01/2006 18:00

Fuel required for: 150 kms.

Weather Restrictions:

Light rain/wind OK

Possible vehicle damage expected on trip:

No damage likely

Trip suitable for:

Novice drivers

Average drivers

Experienced Drivers

Dry Wet



Pets: No

Food: BYO Food

BYO Drinks

Vehicle Requirements:

Track type: Mostly Some Optional

The Trip Leader is required by the Club Committee to turn away vehicles or drivers that do not comply with Trip Categories, or any special conditions indicated on this form.

Access to land is a privilege, not a right. Please comply with instructions from Trip Leaders and at all times respect the properties we drive on. Remember: "Abuse it and we'll lose it"

Notes: Non 4x4 event based in town to try out your GSP skills GPS Exercise / Treasure Hunt trip Meeting Point: Jarden Mile, it's a short dead end street off the traffic lights at the bottom of the Ngarunga Gorge. Bring your GPS (charged or with a spare set of batteries), pencil and paper, a street map of Wellington and a picnic lunch. No off road driving, this is not a trip that needs a 4wd vehicle, family car is ok. It's a fun day suitable for the whole family including the grandparents. Kids may want to enjoy the outdoors at a couple of places so if it's a nice day we may not finish before tea time. You will be given a list of way-point co-ordinates that you have to travel to. When you reach the co-ordinates you hunt for a hidden cache (box) and sign a notebook or answer a question a tricky question to show that you have reached the correct location. Questions are suitable for kids to answer. This trip will take you from Johnsonville to Island Bay and you will not have been to or seen many of the places that you will be going to.

Cross Country Vehicle Club (Wellington) Inc.

Trip Information Sheet



VEHICLE CLUB
Wellington (inc)

Jamboree - up Odlin's Rd - Tue 03/01/2006

Organiser: Tararua 4.W.D. Club Inc.

Description:

Category: Shiny 4X4 to Club 4X4

Trip location(s):

Odlin's Road

Trip leader: Tararua 4.W.D. Club Inc.

Phone

Trip fee \$0.00

Bookings are not required.

Meeting point(s):

-tba-

Finishing point(s):

Dates:

Meeting time Tue 03/01/2006 09:30

Drivers briefing Tue 03/01/2006 09:30

Finish Tue 03/01/2006 16:30

Fuel required for: 0 kms.

Weather Restrictions:

Possible vehicle damage expected on trip:

Trip suitable for:

Dry Wet

Novice drivers

☐ ☐

Average drivers

☐ ☐

Experienced Drivers

☐ ☐

Pets: No

Food: BYO Food

BYO Drinks

Vehicle Requirements:

Tow hooks front and rear

Recovery strop, shovel

First aid kit, fire extinguisher

Roll bar/cage for all soft/open tops

Track type:

Mostly Some Optional

Dirt roads and tracks

☐ ☒ ☐

Clay or mud

☐ ☒ ☐

Creeks, small rivers

☐ ☒ ☐

Average ascents/descents

☐ ☒ ☐

The Trip Leader is required by the Club Committee to turn away vehicles or drivers that do not comply with Trip Categories, or any special conditions indicated on this form.

Access to land is a privilege, not a right. Please comply with instructions from Trip Leaders and at all times respect the properties we drive on. Remember: "Abuse it and we'll lose it"

Notes: Run by Tararua Club details to be finalised Contact is Stuart Barton at stuart.barton@clear.net.nz, phone 04 2399647 (hm)

Cross Country Vehicle Club (Wellington) Inc.

Trip Information Sheet

Jamboree - CCVC Orongorongo Coast

Wed 04/01/2006

Organiser: Ron Wadham



VEHICLE CLUB
Wellington (inc)

Description:

Category: Family Shiny

Trip location(s):

Orongorongo Coast

Trip leader: Ron Wadham

Home phone (04) 563 - 7907 Cellphone 0252106455

Trip fee \$15.00

Bookings are not required.

Meeting point(s):

Rimutaka Forest Park - Wainuiomata

Finishing point(s):

Wainuiomata Coast Road

Dates:

Meeting time Wed 04/01/2006 09:30

Drivers briefing Wed 04/01/2006 09:50

Finish Wed 04/01/2006 16:30

Fuel required for: 150 kms.

Weather Restrictions:

Light rain/wind OK

Subject to landowners discretion

Listen to radio cancellation service

on NewstalkZB 1035AM from 07:00

Possible vehicle damage expected on trip:

No damage likely

Some bush marks possible

Trip suitable for:

Dry Wet

Novice drivers

☒ ☐

Average drivers

☐ ☒

Experienced Drivers

☐ ☐

Pets: No

Food: BYO Food

BYO Drinks

Vehicle Requirements:

Tow hooks front and rear

Recovery strop, shovel

First aid kit, fire extinguisher

Roll bar/cage for all soft/open tops

Club radio preferred

PRS radio preferred

Mud tyres preferable

Track type:

Mostly Some Optional

Gravel

☐ ☒ ☐

Beach or sand

☐ ☒ ☐

Dirt roads and tracks

☐ ☒ ☐

Clay or mud

☐ ☒ ☐

Rocky or river boulders

☐ ☒ ☐

Creeks, small rivers

☐ ☒ ☐

Average ascents/descents

☐ ☒ ☐

Steep ascents/descents

☐ ☒ ☐

The Trip Leader is required by the Club Committee to turn away vehicles or drivers that do not comply with Trip Categories, or any special conditions indicated on this form.

Access to land is a privilege, not a right. Please comply with instructions from Trip Leaders and at all times respect the properties we drive on. Remember: "Abuse it and we'll lose it"

Notes: CCVC to arrange access and trip lead for the Jamboree

Cross Country Vehicle Club (Wellington) Inc.

Trip Information Sheet



VEHICLE CLUB
Wellington (inc)

Jamboree - Puketiro / Akas - Wed 04/01/2006

Organiser: Tararua 4.W.D. Club Inc.

Description:

Category: Hard Yakka

Trip location(s):

Akatarawa Forest - Puketiro Forest

Trip leader: Tararua 4.W.D. Club Inc.
Phone

Trip fee \$0.00

Bookings are not required.

Meeting point(s):

-tba-

Finishing point(s):

Dates:

Meeting time Wed 04/01/2006 09:30

Drivers briefing Wed 04/01/2006 09:30

Finish Wed 04/01/2006 16:30

Fuel required for: 0 kms.

Weather Restrictions:

Possible vehicle damage expected on trip:

Trip suitable for:

Dry Wet

Novice drivers

☐ ☐

Average drivers

☒ ☒

Experienced Drivers

☒ ☒

Pets: No

Food: BYO Food

BYO Drinks

Vehicle Requirements:

Tow hooks front and rear

Recovery strop, shovel

First aid kit, fire extinguisher

Roll bar/cage for all soft/open tops

PRS radio preferred

Good mud tyres essential

Extra recovery gear an advantage

Track type:

Mostly Some Optional

Clay or mud

☒ ☐ ☐

Average ascents/descents

☒ ☐ ☐

Creeks, small rivers

☐ ☒ ☐

Steep ascents/descents

☐ ☒ ☐

The Trip Leader is required by the Club Committee to turn away vehicles or drivers that do not comply with Trip Categories, or any special conditions indicated on this form.

Access to land is a privilege, not a right. Please comply with instructions from Trip Leaders and at all times respect the properties we drive on. Remember: "Abuse it and we'll lose it"

Notes: Tararua trip leading - details still tentative Contact is Stuart Barton at stuart.barton@clear.net.nz, phone 04 2399647 (hm)

Cross Country Vehicle Club (Wellington) Inc.

Trip Information Sheet



VEHICLE CLUB
Wellington (inc)

Boiler Gully for the Shiniies - Sat 07/01/2006

Organiser: Grant Purdie

Description: A novelty for the shiny trucks - this trip for the first time ever.

Category: Family Shiny to Shiny 4X4

Trip location(s):

Akatarawa Forest - Boiler Gully
Akatarawa Forest - Deadwood Ridge

Trip leader: Grant Purdie

Home phone (04) 233 - 1192 Cellphone 021612216

Trip fee \$15.00

Bookings are not required.

Meeting point(s):

Totara park bridge

Finishing point(s):

Totara park bridge

Dates:

Meeting time Sat 07/01/2006 09:30

Drivers briefing Sat 07/01/2006 10:00

Finish Sat 07/01/2006 17:00

Fuel required for: 60 kms.

Weather Restrictions:

Rain, hail or snow "We go"

Possible vehicle damage expected on trip:

No damage likely

Some bush marks possible

Trip suitable for:

Novice drivers

Dry



Wet



Average drivers



Experienced Drivers



Pets:

No

Food:

BYO Food

BYO Drinks

Vehicle Requirements:

Tow hooks front and rear

Recovery strop, shovel

First aid kit, fire extinguisher

Roll bar/cage for all soft/open tops

Club radio preferred

PRS radio preferred

Any tyres suitable

Mud tyres preferable

Extra recovery gear an advantage

Track type:

Dirt roads and tracks

Mostly Some Optional



Average ascents/descents



Gravel



Clay or mud



Rocky or river boulders



Creeks, small rivers



Steep ascents/descents



The Trip Leader is required by the Club Committee to turn away vehicles or drivers that do not comply with Trip Categories, or any special conditions indicated on this form.

Access to land is a privilege, not a right. Please comply with instructions from Trip Leaders and at all times respect the properties we drive on. Remember: "Abuse it and we'll lose it"

Notes: If Boiler Gully is to wet and slippery, or if we do it really quickly, then we'll go to Deadwood Ridge as well. but only if there is enough time.

Cross Country Vehicle Club (Wellington) Inc.

Trip Information Sheet



VEHICLE CLUB
Wellington (inc)

Akatarawa Tag-Along Tour - Sat 14/01/2006
Organiser: Grant Purdie

Description: Akatarawa Tag-Along for GWRC Summer Programme
Category: Shiny 4X4 to Club 4X4

Trip location(s):
Akatarawa Forest

Trip leader: Grant Purdie
Home phone (04) 233 - 1192 Cellphone 021612216

Trip fee \$0.00

Bookings are required.

Meeting point(s):
Maungakotukutuku Gate

Finishing point(s):
Maungakotukutuku Gate
Bulls Run Road - Moonshine

Dates:

Fuel required for: 0 kms.

Weather Restrictions:

Possible vehicle damage expected on trip:

Trip suitable for:	Dry	Wet
Novice drivers	<input type="checkbox"/>	<input type="checkbox"/>
Average drivers	<input type="checkbox"/>	<input type="checkbox"/>
Experienced Drivers	<input type="checkbox"/>	<input type="checkbox"/>

Pets: No
Food: BYO Food
BYO Drinks

Vehicle Requirements:

Tow hooks front and rear
Recovery strop, shovel
First aid kit, fire extinguisher
Roll bar/cage for all soft/open tops

Track type: Mostly Some Optional

The Trip Leader is required by the Club Committee to turn away vehicles or drivers that do not comply with Trip Categories, or any special conditions indicated on this form.

Access to land is a privilege, not a right. Please comply with instructions from Trip Leaders and at all times respect the properties we drive on. Remember: "Abuse it and we'll lose it"

Cross Country Vehicle Club (Wellington) Inc.

Trip Information Sheet

Barry's mystery South Coast Loop

Sat 14/01/2006

Organiser: Barry Insull



VEHICLE CLUB
Wellington (inc)

Description:

Category: Family Shiny

Trip location(s):

Wellington South Coast

Trip leader: Barry Insull

Home phone (04) 234 - 7757 Cellphone 0272404530

Trip fee \$10.00

Bookings are not required.

Meeting point(s):

Owhiro Bay Quarry Car Park

Finishing point(s):

Where we started...

Dates:

Meeting time Sat 14/01/2006 09:30

Drivers briefing Sat 14/01/2006 09:45

Finish Sat 14/01/2006 15:00

Fuel required for: 120 kms.

Weather Restrictions:

Light rain/wind OK

Subject to landowners discretion

Listen to radio cancellation service

on NewstalkZB 1035AM from 07:30

Possible vehicle damage expected on trip:

No damage likely

Some bush marks possible

Trip suitable for:

	Dry	Wet
Novice drivers	<input checked="" type="checkbox"/>	<input checked="" type="checkbox"/>
Average drivers	<input type="checkbox"/>	<input type="checkbox"/>
Experienced Drivers	<input type="checkbox"/>	<input type="checkbox"/>

Pets: No
Food: BYO Food
BYO Drinks

Vehicle Requirements:

Tow hooks front and rear
Recovery strop, shovel
First aid kit, fire extinguisher
Roll bar/cage for all soft/open tops
Club radio preferred
Any tyres suitable
Mud tyres preferable

Track type:

	Mostly	Some	Optional
Average ascents/descents	<input checked="" type="checkbox"/>	<input type="checkbox"/>	<input type="checkbox"/>
Gravel	<input type="checkbox"/>	<input checked="" type="checkbox"/>	<input type="checkbox"/>
Beach or sand	<input type="checkbox"/>	<input checked="" type="checkbox"/>	<input type="checkbox"/>
Dirt roads and tracks	<input type="checkbox"/>	<input checked="" type="checkbox"/>	<input type="checkbox"/>
Clay or mud	<input type="checkbox"/>	<input checked="" type="checkbox"/>	<input type="checkbox"/>
Creeks, small rivers	<input type="checkbox"/>	<input checked="" type="checkbox"/>	<input type="checkbox"/>

The Trip Leader is required by the Club Committee to turn away vehicles or drivers that do not comply with Trip Categories, or any special conditions indicated on this form.

Access to land is a privilege, not a right. Please comply with instructions from Trip Leaders and at all times respect the properties we drive on. Remember: "Abuse it and we'll lose it"

Cross Country Vehicle Club (Wellington) Inc.

Trip Information Sheet

Sunset Tour No 1 - Tue 17/01/2006

Organiser: Ron Wadham



VEHICLE CLUB
Wellington (inc)

Description: GWRC Summer Programme Sunset Tour **Category:** Shiny 4X4

Trip location(s):

Battle Hill & Puketiro Forest

Trip leader: Ron Wadham

Home phone (04) 563 - 7907 Cellphone 0252106455

Trip fee \$0.00

Bookings are required.

Meeting point(s):

Battle Hill - the Dell car park

Finishing point(s):

Where we started...

Dates:

Start Tue 17/01/2006 18:00

Meeting time Tue 17/01/2006 17:00

Drivers briefing Tue 17/01/2006 17:30

Finish Tue 17/01/2006 20:00

Fuel required for: 80 kms.

Weather Restrictions:

Possible vehicle damage expected on trip:

No damage likely
Some bush marks possible

Trip suitable for:

Novice drivers

Dry Wet

☐☐

Average drivers

☒☒

Experienced Drivers

☒☒

Pets: No

Food: BYO Food
BYO Drinks

Vehicle Requirements:

Tow hooks front and rear

Recovery stop, shovel

First aid kit, fire extinguisher

Roll bar/cage for all soft/open tops

Club radio preferred

Good mud tyres essential

Track type:

Clay or mud

Dirt roads and tracks

Creeks, small rivers

Average ascents/descents

Mostly Some Optional

☒☐☐☐☒☐☐☒☐☐☒☐

The Trip Leader is required by the Club Committee to turn away vehicles or drivers that do not comply with Trip Categories, or any special conditions indicated on this form.

Access to land is a privilege, not a right. Please comply with instructions from Trip Leaders and at all times respect the properties we drive on. Remember: "Abuse it and we'll lose it"

Notes: Taking members of the public as part of the Summer Programme run by the Greater Wellington Regional Council.

Cross Country Vehicle Club (Wellington) Inc.

Trip Information Sheet



VEHICLE CLUB
Wellington (inc)

McKenzie Trail for Shinies - Sat 21/01/2006

Organiser: Grant Purdie

Description: Normally a Club 4x4, this is a chance for the shinies to try it out.

Category: Shiny 4X4

Trip location(s):

Foxton Beach - McKenzie Trail

Trip leader: Grant Purdie

Home phone (04) 233 - 1192 Cellphone 021612216

Trip fee \$0.00

Bookings are not required.

Meeting point(s):

Bird Sanctuary Bollards, 50m past Foxton Beach Motor Camp gate.

Finishing point(s):

Where we started...

Dates:

Meeting time Sat 21/01/2006 10:15

Drivers briefing Sat 21/01/2006 10:30

Finish Sat 21/01/2006 17:00

Fuel required for: 80 kms.

Weather Restrictions:

Rain, hail or snow "We go"

Possible vehicle damage expected on trip:

No damage likely

Some bush marks possible

Trip suitable for:

	Dry	Wet
Novice drivers	<input type="checkbox"/>	<input type="checkbox"/>
Average drivers	<input checked="" type="checkbox"/>	<input checked="" type="checkbox"/>
Experienced Drivers	<input checked="" type="checkbox"/>	<input checked="" type="checkbox"/>

Pets: No

Food: BYO Food
BYO Drinks

Vehicle Requirements:

Tow hooks front and rear
Recovery strop, shovel
First aid kit, fire extinguisher
Roll bar/cage for all soft/open tops
Club radio preferred
PRS radio preferred
Any tyres suitable
Extra recovery gear an advantage

Track type:

Beach or sand

Average ascents/descents

Steep ascents/descents

Mostly Some Optional

☒ ☐ ☐

☒ ☐ ☐

☐ ☒ ☐

The Trip Leader is required by the Club Committee to turn away vehicles or drivers that do not comply with Trip Categories, or any special conditions indicated on this form.

Access to land is a privilege, not a right. Please comply with instructions from Trip Leaders and at all times respect the properties we drive on. Remember: "Abuse it and we'll lose it"

Cross Country Vehicle Club (Wellington) Inc.

Trip Information Sheet



VEHICLE CLUB
Wellington (inc)

Downhill the hard way! - Sat 28/01/2006

Organiser: Andrew Farmer

Description: a short downhill track that may take a while.

Category: Hard Yakka

Trip location(s):
Gill's Farm

Trip leader: Andrew Farmer
Home phone 045676677 Cellphone 025446803

Trip fee \$15.00

Bookings are not required.

Meeting point(s):
Old Makara Garage - Makara Village

Finishing point(s):
Where we started...

Dates:

Meeting time Sat 28/01/2006 10:00
Drivers briefing Sat 28/01/2006 10:15
Finish Sat 28/01/2006 15:00

Fuel required for: 30 kms.

Weather Restrictions:
Rain, hail or snow "We go"

Possible vehicle damage expected on trip:
Body damage from rocky/dirt banks expected

Trip suitable for:

	Dry	Wet
Novice drivers	<input type="checkbox"/>	<input type="checkbox"/>
Average drivers	<input type="checkbox"/>	<input type="checkbox"/>
Experienced Drivers	<input checked="" type="checkbox"/>	<input checked="" type="checkbox"/>

Pets: No
Food: BYO Food
BYO Drinks

Vehicle Requirements:

Tow hooks front and rear
Recovery strap, shovel
First aid kit, fire extinguisher
Roll bar/cage for all soft/open tops
Club radio or PRS required
Roll bar/cage recommended all vehicles
Good mud tyres essential
Winch required
Extra recovery gear an advantage

Track type:	Mostly	Some	Optional
Rocky or river boulders	<input checked="" type="checkbox"/>	<input type="checkbox"/>	<input type="checkbox"/>
Average ascents/descents	<input checked="" type="checkbox"/>	<input type="checkbox"/>	<input type="checkbox"/>
Steep ascents/descents	<input type="checkbox"/>	<input checked="" type="checkbox"/>	<input type="checkbox"/>

The Trip Leader is required by the Club Committee to turn away vehicles or drivers that do not comply with Trip Categories, or any special conditions indicated on this form.

Access to land is a privilege, not a right. Please comply with instructions from Trip Leaders and at all times respect the properties we drive on. Remember: "Abuse it and we'll lose it"

Notes: A short run down a creek. Never been driven so it should be fun. VERY technical drive - if we find it too easy, we'll go back up - and that WILL take a while!!

Cross Country Vehicle Club (Wellington) Inc.

Event Information Sheet



VEHICLE CLUB
Wellington (inc)

Downhill the hard way! - Sat 28/01/2006

Organiser: Andrew Farmer

Description: Downhill the hard way

Location: See Trip info sheet

Event status: Confirmed

Dates:

Meeting time Sat 28/01/2006 10:00

Expected finish time Sat 28/01/2006 15:00

Notes: another opportunity to come along and watch the hard yakka trucks get stuck/break/roll over etc. No 4wding reqd for spectators - you can come in the family car if you wish. Note the viewing is a bit scratchy/nettles etc so may not suit very small kids. Because of the easy access, you can leave when you wish.

Cross Country Vehicle Club (Wellington) Inc.

Trip Information Sheet



VEHICLE CLUB
Wellington (inc)

Back to the Aka's - Sun 29/01/2006

Organiser: Eric Bon

Description:

Category: Family Shiny

Trip location(s):

Akatarawa Forest

Trip leader:

Eric Bon
Home phone (04) 565 - 1597 Cellphone 0212678081

Trip fee \$15.00

Bookings are not required.

Meeting point(s):

Moonshine/Haywards corner

Finishing point(s):

-tba-

Dates:

Meeting time Sun 29/01/2006 09:30

Drivers briefing Sun 29/01/2006 09:40

Finish Sun 29/01/2006 16:30

Fuel required for: 140 kms.

Weather Restrictions:

Rain, hail or snow "We go"

Subject to landowners discretion

Possible vehicle damage expected on trip:

No damage likely

Some bush marks possible

Trip suitable for:

	Dry	Wet
Novice drivers	<input checked="" type="checkbox"/>	<input checked="" type="checkbox"/>
Average drivers	<input type="checkbox"/>	<input type="checkbox"/>
Experienced Drivers	<input type="checkbox"/>	<input type="checkbox"/>

Pets:

No

Food:

BYO Food

BYO Drinks

Vehicle Requirements:

Tow hooks front and rear
Recovery strap, shovel
First aid kit, fire extinguisher
Roll bar/cage for all soft/open tops
Club radio preferred
Any tyres suitable

Track type:

Gravel	<input type="checkbox"/>	<input checked="" type="checkbox"/>	<input type="checkbox"/>
Dirt roads and tracks	<input type="checkbox"/>	<input checked="" type="checkbox"/>	<input type="checkbox"/>
Clay or mud	<input type="checkbox"/>	<input checked="" type="checkbox"/>	<input type="checkbox"/>
Creeks, small rivers	<input type="checkbox"/>	<input checked="" type="checkbox"/>	<input type="checkbox"/>
Average ascents/descents	<input type="checkbox"/>	<input checked="" type="checkbox"/>	<input type="checkbox"/>

Mostly Some Optional

The Trip Leader is required by the Club Committee to turn away vehicles or drivers that do not comply with Trip Categories, or any special conditions indicated on this form.

Access to land is a privilege, not a right. Please comply with instructions from Trip Leaders and at all times respect the properties we drive on. Remember: "Abuse it and we'll lose it"

Notes: Trip Leader may change

Cross Country Vehicle Club (Wellington) Inc.

Trip Information Sheet



VEHICLE CLUB
Wellington (inc)

Sutherlands track Trip Leaders - Sun 29/01/2006
Organiser: Ray Harkness

Description: training for trip leaders

Category: Shiny 4X4

Trip location(s):
Sutherland's Track

Trip leader: Ray Harkness
Home phone 049705348 Cellphone

Trip fee \$0.00

Bookings are required.

Meeting point(s):
-tba-

Finishing point(s):

Dates:

Meeting time Sun 29/01/2006 09:30
Drivers briefing Sun 29/01/2006 09:30
Book by... Sun 22/01/2006 00:00
Finish Sun 29/01/2006 16:30

Fuel required for: 150 kms.

Weather Restrictions:

Light rain/wind OK
Subject to landowners discretion

Possible vehicle damage expected on trip:

No damage likely
Some bush marks possible

Trip suitable for:

	Dry	Wet
Novice drivers	<input type="checkbox"/>	<input type="checkbox"/>
Average drivers	<input checked="" type="checkbox"/>	<input checked="" type="checkbox"/>
Experienced Drivers	<input checked="" type="checkbox"/>	<input checked="" type="checkbox"/>

Pets: No
Food: BYO Food
BYO Drinks

Vehicle Requirements:

Tow hooks front and rear
Recovery strop, shovel
First aid kit, fire extinguisher
Roll bar/cage for all soft/open tops
PRS radio preferred
Club radio required
Good mud tyres essential

Track type:

	Mostly	Some	Optional
Gravel	<input type="checkbox"/>	<input checked="" type="checkbox"/>	<input type="checkbox"/>
Dirt roads and tracks	<input type="checkbox"/>	<input checked="" type="checkbox"/>	<input type="checkbox"/>
Clay or mud	<input type="checkbox"/>	<input checked="" type="checkbox"/>	<input type="checkbox"/>
Creeks, small rivers	<input type="checkbox"/>	<input checked="" type="checkbox"/>	<input type="checkbox"/>
Average ascents/descents	<input type="checkbox"/>	<input checked="" type="checkbox"/>	<input type="checkbox"/>
Steep ascents/descents	<input type="checkbox"/>	<input checked="" type="checkbox"/>	<input type="checkbox"/>

The Trip Leader is required by the Club Committee to turn away vehicles or drivers that do not comply with Trip Categories, or any special conditions indicated on this form.

Access to land is a privilege, not a right. Please comply with instructions from Trip Leaders and at all times respect the properties we drive on. Remember: "Abuse it and we'll lose it"

Notes: This is for Trip Leaders to learn the area and track - run with Rod Lonsdale for 4x4 clubs in the area, our trip leaders that planto use this track should attend.

Cross Country Vehicle Club (Wellington) Inc.

Trip Information Sheet

Ohinewairua Station - Sat 04/02/2006

Organiser: John Vruink



VEHICLE CLUB
Wellington (inc)

Description:

Category: Shiny 4X4

Trip location(s):

Ohinewairua Station, Taihape

Trip leader: John Vruink

Home phone (04) 567 - 1142 Cellphone 025439981

Trip fee \$10.00

Bookings are required.

Meeting point(s):

Taihape, just past the intersection where SH 1 turns left to head north

Finishing point(s):

Where we started...

Dates:

Meeting time Sat 04/02/2006 10:30

Drivers briefing Sat 04/02/2006 10:35

Finish Mon 06/02/2006 15:00

Fuel required for: 300 kms.

Weather Restrictions:

Rain, hail or snow "We go"

Subject to landowners discretion

Possible vehicle damage expected on trip:

No damage likely

Some damage to sills & corners possible

Trip suitable for:

Novice drivers

Dry

Wet

☐☐

Average drivers

☒☐

Experienced Drivers

☐☐

Pets: No

Food: BYO Food

BYO Drinks

Vehicle Requirements:

Tow hooks front and rear

Recovery strop, shovel

First aid kit, fire extinguisher

Roll bar/cage for all soft/open tops

Club radio preferred

Good mud tyres essential

Track type:

Mostly Some Optional

Steep ascents/descents

☐☒☒

Dirt roads and tracks

☐☒☐

Clay or mud

☐☒☐

Rocky or river boulders

☐☒☐

Creeks, small rivers

☐☒☐

Average ascents/descents

☐☒☐

The Trip Leader is required by the Club Committee to turn away vehicles or drivers that do not comply with Trip Categories, or any special conditions indicated on this form.

Access to land is a privilege, not a right. Please comply with instructions from Trip Leaders and at all times respect the properties we drive on. Remember: "Abuse it and we'll lose it"

Notes: Mostly Farm tracks - Camp over, bring all gear \$5/person/night. Some accommodation available in shearers quarters. Toilets and showers provided

Cross Country Vehicle Club (Wellington) Inc.
Event Information Sheet



VEHICLE CLUB
Wellington (inc)

Taranaki Extreme 4WD challenge - Sat 04/02/2006
Organiser: -tba-

Description:

Location:

Event status: Confirmed

Dates:

Notes: contact Gordon Burnside - gb@excavatordealer.com

Cross Country Vehicle Club (Wellington) Inc.

Trip Information Sheet

Ruahine Ranges - Sun 05/02/2006

Organiser: Ron Wadham



VEHICLE CLUB
Wellington (inc)

Description:

Category: Family Shiny

Trip location(s):

Ruahine Ranges

Trip leader:

Ron Wadham
Home phone (04) 563 - 7907 Cellphone 0252106455

Trip fee \$10.00

Bookings are required.

Meeting point(s):

Ashurst Mobil Service Station

Finishing point(s):

see notes section

Dates:

Meeting time Sun 05/02/2006 10:00

Drivers briefing Sun 05/02/2006 10:20

Finish Sun 05/02/2006 16:30

Fuel required for: 400 kms.

Weather Restrictions:

Rain, hail or snow "We go"

Subject to landowners discretion

Listen to radio cancellation service
on NewstalkZB 1035AM from 07:00

Possible vehicle damage expected on trip:

No damage likely

Some bush marks possible

Trip suitable for:

	Dry	Wet
Novice drivers	<input checked="" type="checkbox"/>	<input type="checkbox"/>
Average drivers	<input type="checkbox"/>	<input checked="" type="checkbox"/>
Experienced Drivers	<input type="checkbox"/>	<input type="checkbox"/>

Pets: No

Food: BYO Food
BYO Drinks

Vehicle Requirements:

Tow hooks front and rear

Recovery strop, shovel

First aid kit, fire extinguisher

Roll bar/cage for all soft/open tops

Mud tyres preferable

Track type:

	Mostly	Some	Optional
Gravel	<input type="checkbox"/>	<input checked="" type="checkbox"/>	<input type="checkbox"/>
Dirt roads and tracks	<input type="checkbox"/>	<input checked="" type="checkbox"/>	<input type="checkbox"/>
Clay or mud	<input type="checkbox"/>	<input checked="" type="checkbox"/>	<input type="checkbox"/>

The Trip Leader is required by the Club Committee to turn away vehicles or drivers that do not comply with Trip Categories, or any special conditions indicated on this form.

Access to land is a privilege, not a right. Please comply with instructions from Trip Leaders and at all times respect the properties we drive on. Remember: "Abuse it and we'll lose it"

Notes: finish in Takapari Rd, or if we have time to do the North range rd on the way home then will finish at Pahiatua track

Cross Country Vehicle Club (Wellington) Inc.

Trip Information Sheet



VEHICLE CLUB
Wellington (inc)

Sunset Tour No 2 - Sat 11/02/2006

Organiser: Ron Wadham

Description: GWRC Summer Programme Sunset Tour **Category:** Shiny 4X4

Trip location(s):

Battle Hill & Puketiro Forest

Trip leader: Ron Wadham

Home phone (04) 563 - 7907 Cellphone 0252106455

Trip fee \$0.00

Bookings are required.

Meeting point(s):

Battle Hill - the Dell car park

Finishing point(s):

Where we started...

Dates:

Meeting time Sat 11/02/2006 16:30

Drivers briefing Sat 11/02/2006 16:45

Finish Sat 11/02/2006 20:30

Fuel required for: 0 kms.

Weather Restrictions:

Subject to landowners discretion

Possible vehicle damage expected on trip:

Some bush marks possible

Trip suitable for:

Novice drivers

Dry

☐

Wet

☐

Average drivers

☒☒

Experienced Drivers

☒☒

Pets: No

Food: BYO Food

BYO Drinks

Vehicle Requirements:

Tow hooks front and rear

Recovery strop, shovel

First aid kit, fire extinguisher

Roll bar/cage for all soft/open tops

Club radio preferred

Good mud tyres essential

Track type:

Clay or mud

Average ascents/descents

Dirt roads and tracks

Creeks, small rivers

Mostly Some Optional

☒☐☐☒☐☐☐☒☐☐☒☐

The Trip Leader is required by the Club Committee to turn away vehicles or drivers that do not comply with Trip Categories, or any special conditions indicated on this form.

Access to land is a privilege, not a right. Please comply with instructions from Trip Leaders and at all times respect the properties we drive on. Remember: "Abuse it and we'll lose it"

Notes: Taking members of the public as part of the Summer Programme run by the Greater Wellington Regional Council.

Cross Country Vehicle Club (Wellington) Inc.

Trip Information Sheet



VEHICLE CLUB
Wellington (inc)

Advanced driver training/shiny competition

Sun 12/02/2006

Organiser: Andrew Farmer

Description: advanced training.shiny competition event

Category: Family Shiny to Shiny 4X4

Trip location(s):

Patterson's Farm

Trip leader: Andrew Farmer

Home phone 045676677 Cellphone 025446803

Trip fee \$15.00

Bookings are not required.

Meeting point(s):

Patterson's Farm

Finishing point(s):

Where we started...

Dates:

Meeting time Sun 12/02/2006 10:00

Drivers briefing Sun 12/02/2006 10:15

Finish Sun 12/02/2006 15:00

Fuel required for: 40 kms.

Weather Restrictions:

Dry day only

Light rain/wind OK

Subject to landowners discretion

Possible vehicle damage expected on trip:

No damage likely

Trip suitable for:

Novice drivers

Average drivers

Experienced Drivers

Dry Wet

☒☐☐☒☐☐

Pets: No

Food: BYO Food

BYO Drinks

Vehicle Requirements:

Tow hooks front and rear

Recovery strop, shovel

First aid kit, fire extinguisher

Roll bar/cage for all soft/open tops

Mud tyres preferable

Track type:

Clay or mud

Creeks, small rivers

Average ascents/descents

Steep ascents/descents

Mostly Some Optional

☐☒☐☐☒☐☐☒☐☐☒☐

The Trip Leader is required by the Club Committee to turn away vehicles or drivers that do not comply with Trip Categories, or any special conditions indicated on this form.

Access to land is a privilege, not a right. Please comply with instructions from Trip Leaders and at all times respect the properties we drive on. Remember: "Abuse it and we'll lose it"

Notes: A chance to practice/improve your driving skills. Some hazards will be set, and assistance/training provided to get through them. No damage should happen. Everything is optional.



Trip Categories

Family Shiny:

Description: Family trip. These trips will be straightforward and will usually include some degree of guidance in driving techniques as necessary.

Drivers: Particularly suited to family outings and drivers new to off-road driving, this category is also open to anybody who enjoys this style of trip.

Members: Anybody is welcome, especially prospective new members.

Vehicles: An important objective is minimal challenge and minimal risk to vehicles. Club safety equipment is mandatory for club members; it is not mandatory for non-members although it is recommended for vehicles once their drivers have participated in one or two trips. All open or soft-top vehicles must have a roll bar or roll cage.

Shiny 4x4:

Description: More difficult family trips, for shiny wagons and drivers *with some experience* who want more challenge and don't mind minor bush marks etc on their vehicles.

Drivers: Must have some experience, preferably from the driver training provided by the club.

Particularly important are experience in stopping, failed hill climbs, steep descents and sidings.

Members: These trips are for members only. Prospective members and visitors are welcome if they can demonstrate to the Trip Leader they are members of another club and have adequate experience.

Vehicles: Vehicles must have mud tyres, tow hooks and all the required equipment per the club's document "Vehicle & Equipment Inspections". This applies to all vehicles on the trip. All open or soft-top vehicles must have a roll bar or roll cage.

Club 4x4:

Description: Challenging trips, for experienced drivers. There will be steep and challenging terrain, modestly deep water and mud, likelihood of bush marks.

Drivers: Must have experience beyond that required for Shiny 4x4 trips, including water crossings and vehicle recovery.

Members: These trips are for members only. Prospective members and visitors are welcome if they can demonstrate to the Trip Leader they are members of another club and have adequate experience.

Vehicles: Must have mud tyres, tow hooks and all the required equipment per the club's document "Vehicle & Equipment Inspections". This applies to all vehicles on the trip. Accessories such as high-lift jacks, externally mounted spare tyre, bush bars and multiple jacking points are of advantage. Winches are often particularly useful. Generally a short wheelbase vehicle is better suited for the tight tracks. All open or soft-top vehicles must have a roll bar or roll cage.

Hard Yakka:

Description: Difficult trips with very challenging terrain and surfaces, where winching, digging, and vehicle damage are all a possibility!

Drivers: Experienced drivers only.

Members: These trips are for members only. Prospective members and visitors are welcome if they can demonstrate to the Trip Leader they are members of another club and have adequate experience.

Vehicles: As per the Club 4x4 category. In addition, a roll-bar or roll-cage is recommended for all vehicles on Hard Yakka trips. All open or soft-top vehicles must have a roll bar or roll cage. Often a winch is mandatory on a Hard Yakka trip; this will be specified on the Trip Information Sheet.

It should also be noted that if a trip does not have a Trip Information Sheet in the Chronicle or it doesn't appear on the CCVC website, then it may not be an official club trip and the club insurance policy may not apply.



More Trip Details

Skills & Experience Pre-Requisites:

Family Shiny

All Participants

No pre-requisites

Shiny 4x4

Non Members

Cannot participate

Members

CCVC Driver Training and participated in at least 2 Family Shiny trips after becoming a member.

Members of other 4WD Club

Visitors are welcome if they can demonstrate to the Trip Leader they are members of another 4WD club and have adequate experience.

Club 4x4

Non Members

Cannot participate

Members

CCVC Driver Training and participated in at least 2 Shiny 4x4 trips after becoming a member.

Members of other 4WD Club

Visitors are welcome if they can demonstrate to the Trip Leader they are members of another 4WD club and have adequate experience.

Hard Yakka

Non Members

Cannot participate

Members

CCVC Driver Training and participated in at least 3 Club 4x4 trips after becoming a member.

Members of other 4WD Club

Visitors are welcome if they can demonstrate to the Trip Leader they are members of another 4WD club and have adequate experience.

Cancellation Service.

We have a cancellation service for trips. What! Cancel a trip! It hardly ever happens, in reality sometimes the conditions are just too unpleasant or factors beyond our control that take out the property or the organisers.

So we have registered with Newstalk ZB (1035 AM, and used to be known as 2ZB) who will broadcast any cancellations on the hour every hour from 6:00am. We will endeavour to show on the Trip Information Sheet which times to listen.

Trip Departure Times.

To avoid people arriving at the last minute for a trip, missing the drivers briefing, delaying the trip and generally causing confusion, we'd like to clarify the meaning of the times shown on the Trip Information Sheets.

Meeting Date & Time:

The time you are requested to be at the trip meeting point, to give you a chance to get into position, let your tyres down, and to give the Trip Leader time to collect your details before the Drivers Briefing.

Drivers Briefing Date & Time:

The time that the Trip Leader will explain the trip to drivers, including any special instructions, safety briefing and points of interest.

Departure Date & Time:

The time that the trip will actually drive away.



Repairs and maintenance of all
off road vehicles.

Modifications a speciality.

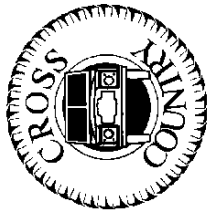
CCVC safety inspections

Contact Carl at

Wellington 4WD Specialists Ltd
26 Hawkins Street
Lower Hutt

Phone (04) 976 5325

Fax (04) 976 5313



VEHICLE CLUB
Wellington (inc)



If undeliverable, please return to PO Box 38-762, Te Puni, Wellington



Off-Highway New Zealand (2005) Ltd

Specialist 4WD driver training for both professional and recreational users.

Courses tailored from Novice to Competition and comply with NZQA standards.

www.ohnz.com

PO Box 48 176, Silverstram, Upper Hutt

Contact Andy on 04 972 5558, Fx 04 972 5558 or 027 448 2319